



# 2016

## SECURITY PRODUCT CATALOG





## ENABLING BETTER BUILDINGS™



Our product portfolio includes electronic access control solutions, architectural hardware, door automation systems, specialty glass hardware, operable wall systems and door and wall applications.

# Table of Contents

## Electromagnetic Locks

8310 MultiMag®	6
8320 MultiMag®	6
8310-IQ IntelliMag®	7
8320-IQ IntelliMag®	7
DE8310 Delayed Egress	8
EW8310 Early Warning	9
8360 Mortise MiniMag®	10
8365 Mortise MicroMag®	10
8371 Surface MiniMag®	11
8372 Surface MiniMag®	11
8375 Surface MicroMag®	12
8380 GateMag®	12
Accessories	13-15
Building Code Signs	16

## Electric Strikes

0161 3/4" Semi-Mortise Rim Strikes	18
0162 3/4" Rim Strikes	19
0563 1/2" Rim Strikes	20
F1 Series Centerline Strikes	21
F2164/2364 All-In-One Strikes	22
4 Series Centerline Strikes	23
5 Series Cylindrical Strikes	24
6 Series Centerline Strikes	25
7 Series Centerline Strikes	26
12C Compact Strike	27
Modular Strike Inserts	28
Modular Strike Faceplates	29
Accessories	30-31
Cross Reference	32

## Keypads & Readers

5355R Proximity Reader & Keypad Combo	34
5395R Proximity Reader	34
6005R Mullion Proximity Reader	34
UNO Single-Door Standalone Controller	35
125kHz Proximity Cards & Fobs	35
9325 Keypads	36
9212 Keypads	37
9320 Reader + Controller	38
9321 Reader + Controller	38
9322 Reader + Controller	39
9323 Reader + Controller	39

## Switches

906 Handicap Pushbutton	42
908 Exit Pushbutton	42
916 Tamper-Resistant Handicap Pushbutton	42
918 Tamper-Resistant Exit Pushbutton	42
990 Oversized Tamper-Resistant Pushbutton	43
991 Pneumatic Time Delay Pushbutton	43
919 Rotary Release Pushbutton	44
920 Emergency Release Keypad/Pushbutton	44
917 Easy Touch Pushbutton	44
972 All-In-One Illuminated Pushbutton	44
970 Illuminated Exit Pushbutton	45
975 Illuminated Exit Pushbutton	45
980 Economy Pushbutton	45
903 Audible Alert Pushbutton	45
960 Tamper-Resistant Keypad	46
904P Emergency Pull Station	47
913 Microwave Motion Switch	47
909 Rocker Switch	47
914 Sounder	47
915 Passive Infrared	48
915AFI Active Focused Infrared	48
946 Square Push Plate	48
950 Round Push Plate	48
946T Square Short-Range Touchless Actuator	49
950T Round Short-Range Touchless Actuator	49
940 Rectangular Push Plate	50
941 Mullion Push Plate	50
947 Dual Vestibule Push Plate	50
9LP36 Low Profile Push Plate	50
9BOLL Bollard/Mounting Post	51
9RCT433 Transmitters	51
9DRCR433 Receivers	51
9500/9501 Mortise Pin Transfers	52
9507/9509 Flex Loops	52
9503/9505 Ball Transfers	52
9520 Series Electrified Hinges	52
9512/9513 Bridge Cables	53
9530 Balanced Magnetic Contact DPS	53
9540 Recessed Magnetic Contact DPS	53
Accessories	54

## Locksets

C800 Series Cylindrical Locksets	56-58
----------------------------------	-------

## Specialty Locks

3590 Lock 'N' Prox	60
3510LM Electromechanical Cabinet Locks	61
3513 Electromechanical Cabinet Lock	62
3525 Electromechanical Rack Handle Lock	63
AL3 Electromechanical Active Latch	64
3520 Electronic Latch	64
3360 Cushion-Lok® Glass Door Locks	65
MEM4400 Compact Electromechanical Lock	65
S2500A Mini Electromagnetic Lock	66
EM-MAG1500 Compact Electromechanical Lock	66
MEM2400 Compact Electromechanical Lock	66

## Exit Devices

6451 Exit Sensor Bar	68
120 Series Exit Bar	69
1200 Series Mechanical Rim Exit Bar	70
1300 Series Electrified Rim Exit Bar	71
Exterior Trims	72

## Power Supplies

10-1 1.5A Power Supply	74
10-3 3A Power Supply	75
10-5 5A Power Supply	76
Accessories	77-78

Terms & Conditions	79
--------------------	----

Glossary	80-81
----------	-------

# Finish Codes

RCI	US	BHMA	Description
4	US4	606	Brushed Brass
10B	US10B	613	Brushed Dark Bronze
26	US26	625	Polished Chrome
26D	US26D	626	Brushed Chrome
28	US28	628	Brushed Anodized Aluminum
40	US313AN	710	Brushed Anodized Dark Bronze
32	US32	629	Polished Stainless Steel
32D	US32D	630	Brushed Stainless Steel
SPC	-	-	Silver Powder-Coated



## A Legacy Of Innovation And Service

Rutherford Controls Int'l has forged strategic global alliances and provides the security, locksmith, and architectural hardware markets with the best in electric locks, door hardware and access control products.

From their humble beginnings in 1923 to their current status as a highly respected supplier of reliable electric locking hardware, RCI's experience and innovation spans the decades and defines the organization well into the next millennium, ushering in a new era of heightened performance.

The focus at RCI is on customer service, technical expertise and providing innovative electric locking hardware to the industry. RCI consistently strives to stay ahead of the pace of technological development and market demand. Ease of use and installation, extensive variety, as well as the highest level of quality are all standard features in RCI's product offering.

Over

90  
Years

in the Locking  
Hardware Industry

# ELECTROMAGNETIC LOCKS

ELECTRIC STRIKES

KEYPADS & READERS

SWITCHES

LOCKSETS

SPECIALTY LOCKS

EXIT DEVICES

POWER SUPPLIES



## Electromagnetic Locks



### 8310 MultiMag®

For single outswinging interior or perimeter doors.  
10-1/2"W x 2-7/8"H x 1-5/8"D (268mm x 73mm x 41mm) – Includes 1/4" (6mm) mounting bracket  
Armature Plate: 7-7/16"W x 2-3/8"H x 5/8"D (190mm x 61mm x 16mm)

### 8320 MultiMag®

For double outswinging interior or perimeter doors.  
21-1/8"W x 2-7/8"H x 1-5/8"D (536mm x 73mm x 41mm) – Includes 1/4" (6mm) mounting bracket  
Armature Plate: 7-7/16"W x 2-3/8"H x 5/8"D (190mm x 61mm x 16mm) each



Energy  
280mA<sup>1</sup>  
Field-Selectable 12/24VDC



Strength  
Up To 1500lbf Holding Force  
(Each Electromagnet)



Warranty  
Lifetime Limited Warranty



Mode  
Fail-Safe



Fire-Rated  
CAN/ULC S104  
UL 10C 1-Hour



Monitoring  
Optional Door Status Sensor (DSS)/  
Security Condition Sensor (SCS) Available

<sup>1</sup>For 8310, 560mA for 8320

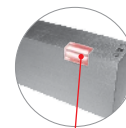
- Adjustable keyhole mounting
- Built-in time delay (instant release with adjustable relock, programmable from 0-90 seconds)
- Convenient plug-in wiring terminals
- Easy-access wiring cavity
- Stabilizing 4-bolt "drop stop" mounting
- MOV surge protection
- Designed to overcome residual magnetism
- Hardened steel armature nut
- Self-drilling Teks® fasteners
- Includes 5/8" (16mm) armature plate, optional 3/8" (9.5mm) available
- Available in Brushed Anodized Aluminum (28) or Brushed Anodized Dark Bronze (40) finish
- UL 294 Special Locking Arrangement Component (6th Edition)
- UL 10C auxiliary lock Listed for fire doors rated up to 1-hour
- California State Fire Marshal Listed (CSFM: 3774-2127.0100)



#### Options

##### SCS – Security Condition Sensor

Electronic field presence sensor for remote and local LED indication of lock status (locked or unlocked), reduced holding force caused by materials between magnet and plate and unlocked device due to current loss.

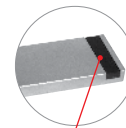


LED Indicator

##### DSS – Door Status Sensor

Magnet-reed type sensor for remote indication of door status (opened or closed) independent of local power. Magnet embedded in armature for tamper resistance; reed switch inside electronic housing cavity for easy access.

Armature Plate:  
9-7/8"W x 2-7/16"H x 11/16"D (252mm x 61mm x 17mm)



Magnetic Door Contact

#### How To Order

MultiMag®		Finish	
Single Magnet	10	28	– Brushed Anodized Aluminum <sup>2</sup>
Double Magnet	20	40	– Brushed Anodized Dark Bronze
83		x	
	SCS		– Security Condition Sensor
	DSS		– Door Status Sensor
	DSS/ SCS		– Door Status Sensor and Security Condition Sensor

#### Options

Example: **8310 SCS x 28**

<sup>2</sup>Standard





## 8310-IQ IntelliMag®

For single outswinging interior or perimeter doors.

10-1/2"W x 2-7/8"H x 1-5/8"D (268mm x 73mm x 41mm) – Includes 1/4" (6mm) mounting bracket

Armature Plate: 7-7/16"W x 2-3/8"H x 5/8"D (190mm x 61mm x 16mm)

## 8320-IQ IntelliMag®

For double outswinging interior or perimeter doors.

21-1/8"W x 2-7/8"H x 1-5/8"D (536mm x 73mm x 41mm) – Includes 1/4" (6mm) mounting bracket

Armature Plate: 7-7/16"W x 2-3/8"H x 5/8"D (190mm x 61mm x 16mm) each



Energy  
590mA<sup>1</sup>  
Field-Selectable 12/24VDC



Strength  
Up To 1500lbf Holding Force  
(Each Electromagnet)



Warranty  
Lifetime Limited Warranty



Mode  
Fail-Safe



Fire-Rated  
CAN/ULC S104  
UL 10C 1-Hour



Monitoring  
Individually Encoded Armature Plate

<sup>1</sup>For 8310-IQ, 1.18A for 8320-IQ

- Designed for high security applications, this intelligent magnet recognizes its own armature plate, preventing anyone from “tricking” the magnet with a separate plate – each encoded armature plate is individually registered to match its own electromagnetic lock
- Two independent relay outputs allow for lock status and alarm status for local and/or remote indication
- Illegal armature plate alarm
- Alarm time setting
- Adjustable keyhole mounting
- Easy-access wiring cavity
- Stabilizing 4-bolt “drop stop” mounting
- Built-in time delay (instant release with adjustable relock, programmable from 0-110 seconds)
- Includes 5/8" (16mm) armature plate
- Available in Brushed Anodized Aluminum (28) or Brushed Anodized Dark Bronze (40) finish
- UL 10C auxiliary lock Listed for fire doors rated up to 1-hour
- California State Fire Marshal Listed (CSFM: 3774-2127:0100)



### How To Order

				<b>IntelliMag®</b>	
		10	– Single Magnet		
		20	– Double Magnet		
83		-IQ	x		
			28	– Brushed Anodized Aluminum <sup>2</sup>	
			40	– Brushed Anodized Dark Bronze	
<b>Finish</b>					

Example: **8320-IQ x 40**

<sup>2</sup>Standard



## Electromagnetic Locks



**PUSH UNTIL  
ALARM SOUNDS  
DOOR CAN BE  
OPENED IN  
15 SECONDS**



## DE8310 Delayed Egress

For single outswinging perimeter door.

DE8310: 10-13/16"W x 2-7/8"H x 2-1/8"D (275mm x 73mm x 54mm) – Includes 1/4" (6mm) mounting bracket

DE8310S: 11-3/4"W x 2-7/8"H x 2-1/8"D (299mm x 73mm x 54mm) – Includes 1/4" (6mm) mounting bracket

Armature Plate: 7-7/16"W x 2-3/8"H x 5/8"D (190mm x 61mm x 16mm)



Energy  
610mA<sup>1</sup>  
Auto-Sensing 12-24VDC



Strength  
Up To 1200lbf Holding Force



Warranty  
5 Year Limited Warranty



Mode  
Fail-Safe



Fire-Rated  
CAN/ULC S104  
UL 10C 1-1/2-Hour



Monitoring  
Local & Remote Relay Outputs & Optional  
Built-In Sounder

<sup>1</sup>Base unit, max at 12VDC

- Built-in sensor detects when pressure is applied to outward swinging doors – no need to replace existing door hardware
- Field-selectable 15 or 30 second release delay with field-selectable 0 to 3 second nuisance delay
- Provision for IBC, SBC, NFPA101, UBC, BOCA or NBC of Canada compliance
- Unique highly visible red/green light panel indicates status of door (local)
- Available with built-in sounder
- Includes 960 Keyswitch for reset and override, Building Code Sign and base unit (DE8310) includes a 914 External Sounder
- Dry contact SPDT and DPDT relays provided for local and/or remote monitoring
- Adjustable keyhole mounting
- Convenient plug-in wiring harnesses
- Easy-access wiring cavity
- Stabilizing 4-bolt "drop stop" mounting
- Surge protection
- Designed to overcome residual magnetism
- Hardened steel armature nut
- Includes self-drilling Teks® fasteners
- Includes 5/8" (16mm) armature plate
- Brushed Anodized Aluminum (28) finish
- UL 10C Auxiliary Locks Listed for fire doors rated up to 1-1/2-hour
- UL 294 Special Locking Arrangements Component



### Options

#### S - Built-In Sounder

Built-in sounder pulses slowly during the short nuisance delay and sounds steady through the release delay and will continue until reset. If forced open before the set release delay has lapsed, the sounder cannot be turned off without switching the system power off.



Built-in Sounder

### How To Order

DE8310  x  28  
S – Built-In Sounder

#### Options

Example: DE8310 S x 28

### Accessories

Model	Description
BC1M-30	30 Second Building Code Sign

Available in English, French and Spanish. Please specify when ordering.





## EW8310 Early Warning

For single outswinging perimeter doors.

10-13/16"W x 2-7/8"H x 2-1/8"D (275mm x 73mm x 54mm) – Includes 1/4" (6mm) mounting bracket

Armature Plate: 7-7/16"W x 2-3/8"H x 5/8"D (190mm x 61mm x 16mm)



Energy  
580mA<sup>1</sup>  
Field-Selectable 12/24VDC



Strength  
Up To 1200lbf Holding Force



Warranty  
10 Year Limited Warranty



Mode  
Fail-Safe



Fire-Rated  
CAN/ULC S104  
UL 10C 1-1/2-Hour



Monitoring  
Built-In Security Condition Sensor

<sup>1</sup>Max at 12VDC

- Built-in sensor detects door movement and initiates a local and/or remote alarm prior to the integrity of the door being compromised
- Unique highly visible red/green light panel indicates status of door (local)
- Built-in security condition sensor indicates that the door is closed, bonded and that the electromagnetic lock is functioning normally
- Dry contact SPDT and DPDT relays provided for local and/or remote monitoring
- Nuisance delay feature accommodates accidental triggering
- Adjustable keyhole mounting
- Convenient plug-in wiring harnesses
- Easy-access wiring cavity
- Stabilizing 4-bolt "drop stop" mounting
- Surge protection
- Designed to overcome residual magnetism
- Hardened steel armature nut
- Includes self-drilling Teks® fasteners
- Includes 5/8" (16mm) armature plate
- Brushed Anodized Aluminum (28) finish
- UL 10C Auxiliary Locks Listed for fire doors rated up to 1-1/2-hour



### How To Order

EW8310 x 28



## Electromagnetic Locks



### 8360 Mortise MiniMag®

For sliding doors.

9"W x 1-1/2"H x 1-1/6"D (223mm x 38mm x 27mm) – Includes 3/4" (19mm) mounting tabs

Armature Plate: 7-1/4"W x 1-1/2"H x 1/2"D (185mm x 38mm x 13mm)



Energy  
500mA<sup>1</sup>  
Field-selectable 12/24VDC



Strength  
Up to 750lbf Holding Force



Warranty  
Lifetime Limited Warranty



Mode  
Fail-Safe



Monitoring  
Built-In Remote Lock Status Sensor

<sup>1</sup>Max at 12VDC

- Low-profile design ideal for sliding doors
- Brushed Anodized Aluminum (28) finish

#### How To Order

8360 x 28



### 8365 Mortise MicroMag®

For small enclosures.

7-15/16"W x 1-11/32"H x 13/16"D (202mm x 34mm x 21mm) – Includes 11/16" (17.5mm) mounting tabs

Armature Plate: 5-1/8"W x 1-1/4"H x 21/64"D (130mm x 32mm x 8.5mm)



Energy  
400mA<sup>1</sup>  
Field-selectable 12/24VDC



Strength  
Up to 300lbf Holding Force



Warranty  
Lifetime Limited Warranty



Mode  
Fail-Safe

<sup>1</sup>Max at 12VDC

- Low-profile design ideal for sliding doors, cabinets and small enclosures
- Brushed Anodized Aluminum (28) finish

#### How To Order

8365 x 28



## 8371 Surface MiniMag®

For single outswinging interior doors.

9-3/8"W x 1-7/8"H x 1"D (238mm x 48mm x 25mm) – Includes 3/16" (5mm) mounting bracket

Armature Plate: 7-1/4"W x 1-1/2"H x 1/2"D (185mm x 38mm x 13mm)

## 8372 Surface MiniMag®

For double outswinging interior doors without mullions.

18-3/4"W x 1-7/8"H x 1"D (476mm x 48mm x 25mm) – Includes 3/16" (5mm) mounting bracket

Armature Plate: 7-1/4"W x 1-1/2"H x 1/2"D (185mm x 38mm x 13mm) each



Energy  
520mA<sup>1</sup>  
Field-Selectable 12/24VDC



Strength  
Up To 750lbf Holding Force



Warranty  
Lifetime Limited Warranty



Mode  
Fail-Safe



Fire-Rated  
CAN/ULC S104  
UL 10C 1-Hour



Monitoring  
Optional Door Status Sensor (DSS)/  
Security Condition Sensor (SCS) Available

<sup>1</sup>Max at 12VDC for 8371, 1.04A for 8372

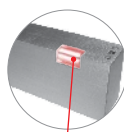
- Stabilizing 4 bolt "drop stop" mounting
- Adjustable keyhole mounting
- MOV surge protection
- Designed to overcome residual magnetism
- Easy-access wiring cavity
- Hardened steel armature nut
- Includes 3/8" (9.5mm) armature plate
- Available in Brushed Anodized Aluminum (28) or Brushed Anodized Dark Bronze (40) finish
- UL 294 Special Locking Arrangement Component (6th Edition)
- UL 10C auxiliary lock Listed for fire doors rated up to 1-hour
- California State Fire Marshal Listed (CSFM: 3774-2127:0100)



### Options

#### SCS – Security Condition Sensor

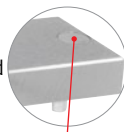
Electronic field presence sensor for remote and local LED indication of lock status (locked or unlocked), reduced holding force caused by materials between magnet and plate and unlocked device due to current loss.



LED Indicator

#### DSS – Door Status Sensor

Magnet-reed type sensor for remote indication of door status (opened or closed) independent of local power. Magnet embedded in armature for tamper resistance; reed switch inside electronic housing cavity for easy access.



Magnetic Door Contact

### How To Order

MiniMag®		Finish	
Single Magnet	71	28	– Brushed Anodized Aluminum <sup>2</sup>
Double Magnet	72	40	– Brushed Anodized Dark Bronze
83		x	
		SCS	– Security Condition Sensor
		DSS	– Door Status Sensor
		DSS/	– Door Status Sensor And
		SCS	Security Condition Sensor

#### Options

Example: **8371 SCS x 28**

<sup>2</sup>Standard



## Electromagnetic Locks

### 8375 Surface MicroMag®

For swinging doors on small enclosures.

6-17/32"W x 1-1/2"H x 13/16"D (166mm x 38mm x 20.5mm) – Includes 1/8" (3mm) mounting bracket  
 Armature Plate: 5-1/8"W x 1-1/4"H x 21/64"D (130mm x 32mm x 8.5mm)



**Energy**  
 360mA<sup>1</sup>  
 Field-selectable 12/24VDC



**Strength**  
 Up to 300lbf Holding Force



**Warranty**  
 Lifetime Limited Warranty



**Mode**  
 Fail-Safe

<sup>1</sup>Max at 12VDC

- Low-profile compact design
- Easy-access wiring cavity
- MOV surge protection
- Designed to overcome residual magnetism
- Hardened steel armature nut
- Self-drilling Teks® fasteners
- Includes 21/64" (8.5mm) armature plate
- Brushed Anodized Aluminum (28) finish

#### How To Order

8375 x 28



### 8380 GateMag®

For interior or exterior perimeter gates.

8-7/8"W x 2-1/2"H x 1-3/4"D (225mm x 63mm x 45mm)  
 Armature Plate: 7-7/16"W x 2-3/8"H x 5/8"D (190mm x 61mm x 16mm)



**Energy**  
 480mA<sup>1</sup>  
 Field-selectable 12/24VDC



**Strength**  
 Up to 1500lbf Holding Force



**Mode**  
 Fail-Safe



**Fire-Rated**  
 CAN/ULC S104  
 UL 10C 1-1/2-Hour



**Warranty**  
 Lifetime Limited Warranty



**Environment**  
 Rugged Weather-Resistant Design

<sup>1</sup>Max at 12VDC

- Rugged, stainless steel housing
- Weather-resistant
- Built-in remote lock status (RLS) indicated whether the magnet is locked or unlocked
- Versatile face or bottom through-bolt mounting
- Built-in conduit fitting and extra-long wire cable allowing easy wire access to an electrical box
- Designed to overcome residual magnetism
- Includes 5/8" (16mm) armature plate, optional 3/8" (9.5mm) available
- Brushed Stainless Steel (32D) finish
- UL 10C auxiliary lock Listed for fire doors rated up 1-1/2-hour
- California State Fire Marshal Listed (CSFM: 3774-2127-0100)



#### How To Order

8380 x 32D

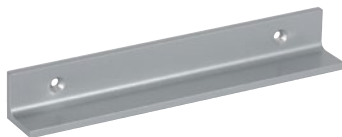
#### Accessories

Model	Description
PB80	Post bracket, to mount to sliding gate





## Accessories



### Angle Brackets

For narrow aluminum frames or center-hung single-acting doors, when inadequate space is left for mounting.

- Available in Brushed Anodized Aluminum (28) or Brushed Anodized Dark Bronze (40). Please specify when ordering.

Model	Dimensions	Finish	Compatible With
AB-01	1"H x 1"W x 10-1/2"L	28/40	8310
AB-02	1-1/2"H x 1"W x 10-1/2"L	28/40	8310
AB-03	1-1/2"H x 1-1/4"W x 10-1/2"L	28/40	8310
AB-20	1"H x 1"W x 21"L	28/40	8320
AB-21	1-1/2"H x 1"W x 21"L	28/40	8320
AB-22	1-1/2"H x 1-1/4"W x 21"L	28/40	8320
AB-710	1"H x 1"W x 9-3/8"L	28/40	8371
AB-711	1-1/2"H x 1"W x 9-3/8"L	28/40	8371
AB-712	1-1/2"H x 1-1/2"W x 9-3/8"L	28/40	8371
AB-713	1-1/2"H x 2"W x 9-3/8"L	28/40	8371
AB-720	1"H x 1"W x 18-3/4"L	28/40	8372
AB-721	1-1/2"H x 1"W x 18-3/4"L	28/40	8372
AB-722	1-1/2"H x 1-1/2"W x 18-3/4"L	28/40	8372
AB-723	1-1/2"H x 2"W x 18-3/4"L	28/40	8372



### Armature Bolts

Model	Dimensions	Description
<b>Compatible With:</b> 8310, 8310-IQ, DE8310, EW8310, 8371, 8380		
ARMB155	2-1/8" (55mm)	For doors 1-3/4"-2-1/4" (44-57mm) thick
ARMB170	2-3/4" (70mm)	For doors 2-1/4"-2-3/4" (57-70mm) thick
ARMB180	3-1/8" (80mm)	For doors 2-1/2"-3" (70-76mm) thick
<b>Compatible With:</b> 8320, 8320-IQ, 8372		
ARMB255	2-1/8" (55mm)	For doors 1-3/4"-2-1/4" (44-57mm) thick
ARMB270	2-3/4" (70mm)	For doors 2-1/4"-2-3/4" (57-70mm) thick
ARMB280	3-1/8" (80mm)	For doors 2-1/2"-3" (70-76mm) thick



### Armature Plates

Model	Dimensions	Finish	Compatible With
AP01	3/8" (9.5mm)	Steel	8310, 8320
AP02	5/8" (16mm)	Steel	8310, 8320, 8380
AP03	3/8" (9.5mm)	Steel	8360, 8371, 8372
AP04	5/16" (8mm)	Steel	8365, 8375
AP20	3/8" (9.5mm)	Steel	8310xDSS, 8320xDSS
AP21	5/8" (16mm)	Steel	8310xDSS, 8320xDSS
AP03D	3/8" (9.5mm)	Steel	8371xDSS, 8372xDSS



### Armature Plate Holders

- Available in Brushed Anodized Aluminum (28) or Brushed Anodized Dark Bronze (40). Please specify when ordering.

Model	Description	Finish	Compatible With
AH10	8310 armature plate holder	28/40	8310
AH15	8310xDSS armature plate holder	28/40	8310xDSS
AH20	8320 armature plate holder	28/40	8320
AH25	8320xDSS armature plate holder	28/40	8320xDSS
AH71	8371 armature plate holder	28/40	8371
AH72	8372 armature plate holder	28/40	8372
AH75	8375 armature plate holder	28/40	8375



### Conduit Mounting Bracket

Used anywhere surface-mounted conduit is required to run wires to the face of the magnetic lock.

Model	Dimensions	Finish	Compatible With
CMB108	1"D x 2-11/64"H x 10-9/16"L	28	8310



### DSS Retrofit Kits

If a door status sensor is desired after magnet has been installed, it can easily be added on site.

- Kit includes both Brushed Anodized Aluminum (28) and Brushed Anodized Dark Bronze (40) cover plate screws.

Model	Description	Finish	Compatible With
DSR01	3/8" (9.5mm)	Steel	8310
DSR02	5/8" (16mm) Standard	Steel	8310
DSR03	3/8" (9.5mm)	Steel	8320
DSR04	5/8" (16mm) Standard	Steel	8320



## Electromagnetic Locks

# Accessories Cont'd



### Filler Bars

For frame stops narrower than 2" (51mm).

- Available in Brushed Anodized Aluminum (28) or Brushed Anodized Dark Bronze (40). Please specify when ordering.

Model	Dimensions	Finish	Compatible With
FB-01	1/4"H x 3/4"W x 10-1/2"L	28/40	8310
FB-02	3/8"H x 3/4"W x 10-1/2"L	28/40	8310
FB-03	1/2"H x 3/4"W x 10-1/2"L	28/40	8310
FB-04	5/8"H x 3/4"W x 10-1/2"L	28/40	8310
FB-05	1/2"H x 5/8"W x 10-1/2"L	28/40	8310
FB-20	1/4"H x 3/4"W x 21"L	28/40	8320
FB-21	3/8"H x 3/4"W x 21"L	28/40	8320
FB-22	1/2"H x 3/4"W x 21"L	28/40	8320
FB-23	5/8"H x 3/4"W x 21"L	28/40	8320
FB-24	1/2"H x 5/8"W x 21"L	28/40	8320
FB-710	1/4"H x 3/4"W x 9-3/8"L	28/40	8371
FB-711	3/8"H x 3/4"W x 9-3/8"L	28/40	8371
FB-712	1/2"H x 3/4"W x 9-3/8"L	28/40	8371
FB-713	5/8"H x 3/4"W x 9-3/8"L	28/40	8371
FB-720	1/4"H x 3/4"W x 18-3/4"L	28/40	8372
FB-721	3/8"H x 3/4"W x 18-3/4"L	28/40	8372
FB-722	1/2"H x 3/4"W x 18-3/4"L	28/40	8372
FB-723	5/8"H x 3/4"W x 18-3/4"L	28/40	8372



### Glass Door Brackets

Required for glass doors without mounting rails.

Model	Dimensions	Finish	Compatible With
GB8112	1/2" (13mm)	32	8310
GB8134	3/4" (19mm)	32	8310
GB8212	1/2" (13mm)	32	8320
GB8234	3/4" (19mm)	32	8320
GB7112	1/2" (13mm)	32	8371
GB7134	3/4" (19mm)	32	8371
GB7212	1/2" (13mm)	32	8372
GB7234	3/4" (19mm)	32	8372
GB7512	1/2" (13mm)	32	8375
GB7534	3/4" (19mm)	32	8375



### L Brackets

Required when there is no space on the header to mount the magnetic lock. Magnet mounts on bracket and bracket mounts on vertical face of frame.

- Available in Brushed Anodized Aluminum (28) or Brushed Anodized Dark Bronze (40). Please specify when ordering.

Model	Dimensions	Finish	Compatible With
LB-10	2-1/2"H x 2"W x 10-1/2"L	28/40	8310
LB-20	2-1/2"H x 2"W x 21"L	28/40	8320



### Post Bracket

Used to mount armature plate to sliding gate.

Model	Dimensions	Finish	Compatible With
PB-80	3-1/2"H x 2-1/2"W x 8-7/8"L	28	8380



### Spacers

For aluminum blade stop frames. Used to lower the magnet to align with armature plate.

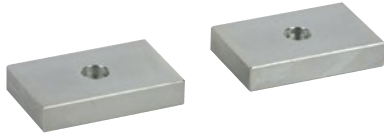
- Available in Brushed Anodized Aluminum (28) or Brushed Anodized Dark Bronze (40). Please specify when ordering.

Model	Dimensions	Finish	Compatible With
SP-01	1/4"H x 1-1/2"W x 10-1/2"L	28/40	8310
SP-02	3/8"H x 1-1/2"W x 10-1/2"L	28/40	8310
SP-03	1/2"H x 1-1/2"W x 10-1/2"L	28/40	8310
SP-04	5/8"H x 1-1/2"W x 10-1/2"L	28/40	8310
SP-20	1/4"H x 1-1/2"W x 21"L	28/40	8320
SP-21	3/8"H x 1-1/2"W x 21"L	28/40	8320
SP-22	1/2"H x 1-1/2"W x 21"L	28/40	8320
SP-23	5/8"H x 1-1/2"W x 21"L	28/40	8320
SP-710	1/4"H x 1"W x 9-3/8"L	28/40	8371
SP-711	3/8"H x 1"W x 9-3/8"L	28/40	8371
SP-712	1/2"H x 1"W x 9-3/8"L	28/40	8371
SP-713	5/8"H x 1"W x 9-3/8"L	28/40	8371
SP-720	1/4"H x 1"W x 18-3/4"L	28/40	8372
SP-721	3/8"H x 1"W x 18-3/4"L	28/40	8372
SP-722	1/2"H x 1"W x 18-3/4"L	28/40	8372
SP-723	5/8"H x 1"W x 18-3/4"L	28/40	8372
SP-75	1/4"H x 13/16"W x 6-9/16"L	28/40	8375





# Accessories Cont'd



## Split Armature Plates

Allow use of single magnet lock with pair of doors.

Model	Dimensions	Finish	Compatible With
SA138	3/8" (9.5mm)	Steel	8310
SA158	5/8" (16mm)	Steel	8310
SA75	5/16" (8mm)	Steel	8375

Note: Holding force is reduced with use of split armature plates.



## Top Jamb "Z" Bracket

Allows for horizontal adjustment of armature plate. Mounted on pull side of the door.

- Available in Brushed Anodized Aluminum (28) or Brushed Anodized Dark Bronze (40). Please specify when ordering.

Model	Dimensions	Finish	Compatible With
TJ10	8310 Z bracket kit	28/40	8310
TJ20	8320 Z bracket kit	28/40	8320
TJ71	8371 Z bracket kit	28/40	8371
TJ72	8372 Z bracket kit	28/40	8372
TJ75	8375 Z bracket kit	28/40	8375
TJ80	8380 Z bracket kit	28/40	8380



## Building Code Signs

**PUSH UNTIL  
ALARM SOUNDS  
DOOR CAN BE  
OPENED IN  
15 SECONDS**

### BC1 Series Building Code Signs

11"W x 10"H (28cm x 25cm)

- Available in English, French and Spanish. Please specify when ordering.

Model	Description
BC1P	15 Seconds, printed on clear Plexiglass
BC1M	15 Seconds, printed on clear Mylar
BC1MW	15 Seconds, printed on white Mylar
BC1T	15 Seconds, red vinyl transfer letters
BC1M-30	30 Seconds, printed on clear Mylar

**EMERGENCY EXIT  
UNLOCKED  
BY FIRE ALARM**

### BC2 Series Building Code Signs

13"W x 4"H (33cm x 10cm)

- Available in English, French and Spanish. Please specify when ordering.

Model	Description
BC2P	Printed on clear Plexiglass
BC2M	Printed on clear Mylar
BC2MW	Printed on white Mylar
BC2T	Red vinyl transfer letters

**KEEP  
PUSHING  
DOOR UNLOCKS  
IN  
15 SECONDS**

### BC3 Series Building Code Signs

14"W x 12"H (36cm x 30.5cm)

- Available in English, French and Spanish. Please specify when ordering.

Model	Description
BC3P	Printed on clear Plexiglass
BC3M	Printed on clear Mylar
BC3MW	Printed on white Mylar
BC3T	Red vinyl transfer letters

# **ELECTRIC STRIKES**



## Electric Strikes



### 0 Series

## 0161 3/4" Semi-Mortise Rim Strikes

Semi-mortise rim strike designed for use with Pullman latch rim exit devices.  
1-3/4"W x 9"H x 2-3/8"D (45mm x 228mm x 61mm)



Energy  
200mA<sup>1</sup>  
12VAC/VDC Or  
24VAC/VDC



Strength  
1500lb Static  
70ft-lb Dynamic



Endurance  
500,000 Cycles



Mode  
Fail-Secure



Warranty  
3 Year Limited Warranty

<sup>1</sup>Max at 12VDC

- Semi-mortise rim strike designed for use with Pullman latch rim exit devices
- Accommodates 1/2" to 3/4" (13mm–19mm) latch projection
- Ensures proper latch alignment with horizontal adjustment
- Stainless steel ensures superior strength and creates a sleek aesthetic
- Lockdown holes for secure mount
- Non-handed
- Brushed Stainless Steel (32D) finish
- UL 1034 burglary-resistant Listed
- Certified to ANSI/BHMA standard A156.31, Grade 1, endurance 500,000 cycles

SECURITY



### How To Order

0161	-		x	32D
		05	-	12VAC/VDC
		08	-	24VAC/VDC

#### Voltage

Example: 0161 - 05 x 32D

### Accessories

Model	Description
0161DDH	Double door housing, SPC finish

Note: UL 1034 Burglary-resistant listing does not apply with use of 0161DDH.



## 0 Series 0162 3/4" Rim Strikes

Completely surface-mounted rim strike designed for use with Pullman latch rim exit devices.  
1-3/4" x 9" x 3/4" (45mm x 230mm x 20mm)



**Energy**  
500mA<sup>1</sup>  
Field-Selectable  
12/24VDC & 12-24VAC



**Latch Monitor**  
Optional Latch Monitor  
Model Available



**Strength**  
1500lbf Static  
70ft-lb Dynamic



**Fire-Rated**  
Optional 3-Hour  
Model Available



**Endurance**  
500,000 Cycles



**Warranty**  
5 Year Limited Warranty



**Mode**  
Fail-Secure

<sup>1</sup>Max at 12VDC

- Completely surface-mounted – no frame cutting required
- Accommodates 1/2" to 3/4" (13mm–19mm) latch projection
- Mounting spacer included to provide enhanced latch engagement
- Stainless steel ensures superior strength and creates a sleek aesthetic
- Horizontal adjustment ensure proper latch positioning to compensate for door misalignment – up to 1/4" (6.4mm)
- Conventional keeper design (one moving part)- promotes even load distribution
- Plug-in wire connector
- Lockdown holes for secure mount
- HEX socket head cap screws for added support
- Installation tool included (HEX key)
- Non-handed (featuring horizontal solenoid design)
- 1/16" (1.5mm) mounting spacer for additional latch engagement included

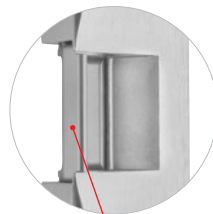
- Brushed Stainless Steel (32D) finish
- Factory tested to over 4-million cycles of operation
- UL 1034 burglary-resistant Listed
- UL 294 Listed for Access Control Unit Accessory (6th Edition)
- CAN/ULC S104 & UL 10C, 3-hour fire-rating Listed (optional)
- Certified to ANSI/BHMA standard A156.31, Grade 1, endurance 500,000 cycles

SECURITY



### Options

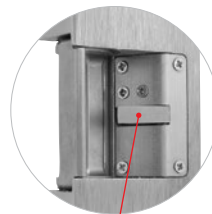
- LM – Latch monitor
- F – 3-hour fire-rating Listed



Conventional Keeper  
(One Moving Part)



Lockdown Holes  
For Secure Mount



Latch Monitor  
(0162LM Model)

### How To Order

#### Options

F	– Fire-Rated		
0162		x	32D
	LM	– Latch Monitor	

#### Options

Example: **F0162LM x 32D**

### Accessories

Model	Description
0162DDH	Double door housing, SPC finish
0162MSK	1/16" (1.5mm) mounting spacer

*Note: UL 1034 Burglary-resistant listing and fire-rating do not apply with use of 0162DDH.*



## Electric Strikes



### 0 Series

## 0563 1/2" Rim Strikes

Slim, adjustable design ideal for tight-fitting installations. Designed for use with Pullman latch rim exit devices. 1-3/4"W x 9"H x 1/2"D (45mm x 230mm x 13mm)



**Energy**  
30mA<sup>1</sup> Auto-Sensing  
12-24VDC



**Strength**  
1500lb Static  
70ft-lb Dynamic



**Endurance**  
100,000 Cycles



**Mode**  
Field-Selectable  
Fail-Safe & Fail-Secure



**Monitoring**  
Optional Latch Monitor  
Model Available



**Warranty**  
5 Year Limited Warranty

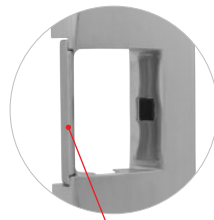
<sup>1</sup>Steady state current at 12VDC, 550mA peak

- Surface-mounted – no frame cutting required
- Compatible with most Pullman latch exit devices with latch projections from 1/2" to 3/4" (13mm–19mm)
- Includes two 1/8" (3.2mm) spacers to create two additional sizes, 5/8" (16mm) & 3/4" (19mm)
- Horizontal adjustment ensure proper latch positioning to compensate for door misalignment – up to 1/4" (6.4mm)
- Conventional keeper design (one moving part) – promotes even load distribution
- Lockdown holes for secure mount
- Low energy: draws less energy than traditional solenoid strikes
- Cost savings: operate 3X more strikes per power supply
- Cooler operation – runs cool to the touch; no suppressor kit needed
- High-grade stainless steel ensures superior strength and creates a sleek aesthetic
- Non-handed
- Plug-in wire connectors
- Brushed Stainless Steel (32D) finish
- UL 1034 burglary-resistant Listed



### Options

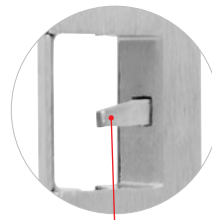
- LM – Latch monitor



Conventional Keeper  
(One Moving Part)



Lockdown Holes  
For Secure Mount



Latch Monitor  
(0563LM Model)

### How To Order

0563  x 32D  
LM – Latch Monitor

#### Options

Example: **0563LM x 32D**

### Accessories

Model	Description
0563DDH	Double door housing, SPC finish
0162MSK	1/16" (1.5mm) mounting spacer

*Note: Maximum voltage must not exceed 28V. Overheated or burnt PCBs caused by incorrect input voltage will not be covered under warranty. UL 1034 Burglary-resistant listing does not apply with use of 0563DDH.*




**F1 Series**

## F1114 Centerline Strikes

Features stainless steel faceplate with square corners ideal for hollow metal frames.

Faceplate: 1-1/4"W x 4-7/8"H (32mm x 124mm)

Insert Depth: 1-3/4" (42mm)

## F1119 Centerline Strikes

Features stainless steel faceplate with square corners ideal for aluminum and wood frames.

Faceplate: 1-3/8"W x 9"H (34mm x 228mm)

Insert Depth: 1-3/4"D (43mm)



**Energy**  
200mA<sup>1</sup>  
11-16VAC, 12VAC/VDC  
Or 24VAC/VDC



**Strength**  
1500lbf Static  
70ft-lb Dynamic



**Endurance**  
500,000 Cycles



**Mode**  
Fail-Secure



**Fire-Rated**  
CAN/ULC S104  
UL 10C 1-1/2-Hour



**Warranty**  
5 Year Limited Warranty

<sup>1</sup>Max at 12VDC

- Stainless steel faceplate with square corners
- Accommodates 1/2" (12.7mm), 5/8" (16mm) or 3/4" (19mm) latch projection
- Up to 1/4" (6.4mm) horizontal adjustment, relieves side-load pressure, ensuring proper latch alignment
- Saddle-mount housing design for enhanced strength and durability
- Tamper-resistant pry-guard concealed inside the frame
- Energy efficient coil design
- Mounting tabs, shims and fasteners included
- Non-handed
- Brushed Stainless Steel (32D) finish
- UL 1034 burglary-resistant Listed
- CAN/ULC S104 & UL 10C, 1-1/2 hour fire-rating Listed
- Certified to ANSI/BHMA standard A156.31, Grade 1, endurance 500,000 cycles

SECURITY



### How To Order

		Faceplate			
	14	- 1-1/4"W x 4-7/8"H (32mm x 124mm), ANSI Square Corner			
	19	- 1-3/8"W x 9"H (34mm x 228mm), Square Corner			
F1	1	-	x	32D	
		01	- 11-16VAC		
		05	- 12VAC/VDC		
		08	- 24VAC/VDC		
			<b>Voltage</b>		

Example: **F1119-01 x 32D**



## Electric Strikes



### 2 Series

## F2164/2364 All-In-One Strikes

Versatile design features adjustable deadbolt keeper and deadlatch ramp allowing it to work with most locks.

Faceplate: 1-1/4"W x 4-7/8"H (32mm x 124mm)

Insert Depth: 1-3/4"D (45mm)



Energy  
375mA<sup>1</sup>  
Field-Selectable  
12/24VDC, 12-24VAC<sup>2</sup>



Strength  
1500lbf Static  
70ft-lb Dynamic



Endurance  
500,000 Cycles



Mode  
Available In  
Fail-Secure & Fail-Safe



Fire-Rated  
Optional 3-Hour  
Model Available



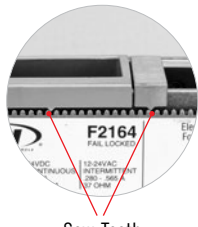
Latch Monitor  
Plug-In Latch Monitor  
Accessory Available



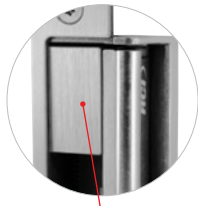
Warranty  
5 Year Limited Warranty

<sup>1</sup>Max at 12VDC

<sup>2</sup>12-24VAC not available with 2364 model



Saw-Tooth  
Adjustment Locator<sup>‡</sup>



Deadbolt Plug

- Versatile strike designed to work with most locks
- Accommodates 1/2" (12.7mm) to 3/4" (19mm) latch projection
- Adjustable deadbolt keeper and deadlatch ramp
- Accommodates up to 1" deadbolt (night-latch function only, bolt will not release)
- Plug-in wire connector
- Runs cool – solenoid design prevents keeper from heating up
- Trim plate included to cover up irregular frame cut-out
- Stainless steel ensures superior strength and creates a sleek aesthetic
- Includes two keeper shims – 1/16" (1.5mm) and 1/8" (3mm) –for horizontal adjustment for misaligned frames (unique sliding design)<sup>‡</sup>
- Non-handed
- Factory tested to over 2-million cycles of operation
- Brushed Stainless Steel (32D) finish
- UL 294 Listed for Access Control Unit Accessory (6th Edition)
- UL 1034 burglary-resistant Listed
- CAN/ULC S104 & UL 10C, 3-hour fire-rating Listed (F2164 only)
- Certified to ANSI/BHMA standard A156.31, Grade 1, endurance 500,000 cycles

SECURITY



### Options

- F – 3-hour fire-rating Listed

### How To Order

#### Options

F	– Fire-Rated <sup>3</sup>				
	2		64	x	32D
		1			– Fail-Secure
		3			– Fail-Safe

#### Mode

Example: **F2164 x 32D**

<sup>3</sup>Available in fail-secure mode only.

### Accessories

Model	Description
F2LM	Latch monitor plug-in kit (2A @ 24VDC)
2FP	Filler plate (for use when replacing discontinued 2 Series models)
F2-19	Centerline faceplate, 1-3/8"W x 9"H (35mm x 229mm), 32D finish
F2-29	Offset faceplate, 1-3/8"W x 9"H (35mm x 229mm), 32D finish

<sup>‡</sup> Patent pending features

## 4 Series Centerline Strikes

Accommodates 3/4" (19mm) latch projection. Various faceplate options available to accommodate most frame types.

Faceplate: 1-1/4"W x 4-7/8"H (32mm x 124mm)

Insert Depth: 1-3/4"D (45mm)



4104  
4304



4105  
4305



4107  
4307



4108  
4308



4114  
4314



4119  
4319



F4104

F4105



Energy  
200mA<sup>1</sup>  
11-16VAC, 12VAC/VDC,  
24VAC/VDC



Strength  
500lb Static<sup>2</sup>  
70ft-lb Dynamic



Endurance  
500,000 Cycles<sup>3</sup>



Mode  
Fail-Secure &  
Fail-Safe



Fire-Rated  
Optional 1-1/2-Hour  
Models Available<sup>4</sup>



Warranty  
3 Year Limited Warranty

<sup>1</sup>At 12VDC

<sup>2</sup>1500lb Static for fire-rated models, 1000lb for non-fire-rated 04 & 14 faceplates

<sup>3</sup>Fire-rated models only, 250,000 for other models

<sup>4</sup>Available in fail-secure mode with 04 & 14 faceplates only.

- Accommodates 3/4" (19mm) latch projection
- 1-1/2" (38mm) cut-out depth accommodates most door frame material types
- Use with wide range of door thicknesses, 1-3/8" to 2-3/8" (35mm-60mm)
- Standard mounting tabs and fasteners included
- Non-handed
- Brushed Stainless Steel (32D) finish
- UL 1034 burglary-resistant Listed
- UL 10C, 1-1/2-hour fire-rating Listed (optional)
- Certified to ANSI/BHMA standard A156.31, Grade 1, endurance 500,000 cycles<sup>3</sup>

SECURITY



### Options

- F – 1-1/2-hour fire-rating Listed

### How To Order

Options		Fire-Rated <sup>4</sup>		Voltage		Faceplate
				Fail-Safe	Fail-Secure	
					01	
					05	
					08	
					06	
					09	
		4				x 32D
Fail-Secure		1	04	– 1-1/4"W x 4-7/8"H (32mm x 124mm), ANSI Round Corner		
Fail-Safe		3	05	– 1-1/8"W x 5-7/8"H (29mm x 150mm), Round Corner		
			07	– 1-1/4"W x 6-7/8"H (32mm x 175mm), Round Corner		
			08	– 1-7/16"W x 7-15/16" (37mm x 202mm), Round Corner		
			14	– 1-1/4"W x 4-7/8"H (32mm x 124mm), ANSI Square Corners		
			19	– 1-3/8"W x 9"H (34mm x 228mm), Square Corners		

Example: **F4104-05 x 32D**

<sup>4</sup>Available in fail-secure mode with 04 & 14 faceplates only.

### Accessories

Model	Description
BXES2	Weldable box
4/7JIG	Standard profile frame prep jig, aluminum
LEK01	1" lip extension kit for retrofit applications, black finish
LEK02	2" lip extension kit for retrofit applications, black finish
LEK03	3" lip extension kit for retrofit applications, black finish
SMT-01	Strike marketing template kit, aluminum
TP-47-5PK	Trim plates, 5 pack, black finish
930-LG	Standard profile latch guard, 32D finish



## Electric Strikes



# 5 Series Cylindrical Strikes

Designed to fit ANSI-prepped frames.  
Faceplate: 1-1/4"W x 4-7/8"H (32mm x 124mm)  
Insert Depth: 15/16"D (24mm)



Energy  
26mA<sup>1</sup>  
Auto-Sensing  
12-24VDC



Fire-Rated  
Optional 3-Hour  
Models Available



Strength  
1500lbf Static  
70ft-lb Dynamic



Latch Monitor  
Latch Monitor  
Model Available



Endurance  
250,000 Cycles<sup>2</sup>



Warranty  
5 Year Limited Warranty



Mode  
Available in  
Fail-Secure & Fail-Safe

<sup>1</sup>Max steady state at 12 VDC, 350mA peak

<sup>2</sup>100,000 for LM models

- Accommodates 5/8" (16mm) latch projection
- 1/2" (12.7mm) vertical adjustment
- Designed to fit ANSI-prepped frames
- 1/16" (1.5mm) horizontal adjustment
- Plug-in wire connectors
- Non-handed
- Low energy: draws less energy than traditional solenoid strikes
- Cost savings: operate 3X more strikes per power supply
- Cooler operation – runs cool to the touch; no suppressor kit needed
- Brushed Stainless Steel (32D) finish
- UL 1034 burglary-resistant Listed
- CAN/ULC S104, UL 10C & NFPA 252, 3-hour fire-rating Listed

SECURITY



### Options

- LM – Latch Monitor
- F – CAN/ULC S104, UL 10C & NFPA 252, 3-hour fire-rating Listed

### How To Order

Options				
F	– Fire-Rated <sup>3</sup>			
	5	14	x	32D
Fail-Secure –	1		LM	– Latch Monitor
Fail-Safe –	3			

### Mode

Example: **F5314 x 32D**

<sup>3</sup>Available in fail-secure mode only.

### Accessories

Model	Description
5CP	Cover plate, 32D finish



S/L6504



S/L6505



S/L6507



S/L6508



S/L6514



S/L65U

## 6 Series Centerline Strikes

Two profiles available to accommodate different latch projections. Various faceplate options available to accommodate most frame types.

Faceplate: 1-1/4"W x 4-7/8"H (32mm x 124mm)

Standard Insert Depth: 1-3/16"D (30mm)

Low Profile Insert Depth: 1-1/16" (27mm)



Energy  
375mA<sup>1</sup>  
Field-Selectable  
12/24VDC, 12-24VAC



Mode  
Field-Selectable  
Fail-Secure & Fail-Safe



Strength  
1500lb Static<sup>2</sup>  
70ft-lb Dynamic



Monitoring  
Optional Latch & Keeper  
Monitor Models Available



Endurance  
500,000 Cycles



Warranty  
3 Year Limited Warranty

<sup>1</sup>At 12VDC

<sup>2</sup>04 & 14 faceplates only. Grade 2, 1000lb static for 05, 07, 08 & U faceplates. Standard 32D finish only.

- Standard profile accommodates 3/4" (19mm) and low-profile accommodates 1/2" (12.7mm) or 5/8" (16mm) latch projections
- 1/4" (6.4mm) horizontal adjustment
- Plug-in wire connectors
- Trim plate included to cover up irregular frame cut-out
- Non-handed
- Brushed Stainless Steel (32D)
- Factory tested to over 1-million cycles of operation
- UL 294 Listed for Access Control Unit Accessory (6th Edition)
- UL 1034 burglary-resistant Listed
- Certified to ANSI/BHMA standard A156.31, Grade 1, endurance 500,000 cycles<sup>2</sup>

SECURITY



### Options

- LMKM – Latch and keeper monitor

### How To Order

		Options			
		Latch And Keeper Monitor – LMKM			
		65	x	32D	
Profile	Standard –	S	04	– 1-1/4"W x 4-7/8"H (32mm x 124mm), ANSI Round Corners	
	Low Profile –	L	05	– 1-1/8"W x 5-7/8"H (29mm x 150mm), Round Corners	
			07	– 1-1/4"W x 6-7/8"H (32mm x 175mm), Round Corners	
			08	– 1-7/16"W x 7-15/16" (37mm x 202mm), Round Corners	
			14	– 1-1/4"W x 4-7/8"H (32mm x 124mm), ANSI Square Corners	
			U	– Universal, Includes 3 Faceplates (04, 08 & 14)	

Faceplate

Example: **L6507LMKM x 32D**

### Accessories

Model	Description
S6JIG	Standard profile frame prep jig, aluminum (for S6504 and S6514)
L6JIG	Low profile frame prep jig, aluminum (for L6504 and L6514)
LEKS601	1" lip extension kit for retrofit applications, black finish (for Standard profile)
LEKS602	2" lip extension kit for retrofit applications, black finish (for Standard profile)
LEKS603	3" lip extension kit for retrofit applications, black finish (for Standard profile)
LEKL601	1" lip extension kit for retrofit applications, black finish (for Low profile)
LEKL602	2" lip extension kit for retrofit applications, black finish (for Low profile)
LEKL603	3" lip extension kit for retrofit applications, black finish (for Low profile)
SMT-01	Strike marketing template kit, aluminum
TP-S6-5PK	Trim plates, 5 pack, black finish (for Standard profile)
TP-L6-5PK	Trim plates, 5 pack, black finish (for Low profile)



## Electric Strikes



7104  
7304



7105  
7305



7107  
7307



7108  
7308



7114  
7314



7119  
7319

## 7 Series Centerline Strikes

Accommodates 5/8" (16mm) latch projection. Various faceplate options available to accommodate most frame types.

Faceplate: 1-1/4"W x 4-7/8"H (32mm x 124mm)

Insert Depth: 1-3/4"D (45mm)



Energy  
280mA<sup>1</sup>  
11-16VAC, 12VDC,  
24VAC, 24VDC



Strength  
500lb Static  
70ft-lb Dynamic



Endurance  
250,000 Cycles



Mode  
Available In  
Fail-Secure & Fail-Safe



Warranty  
3 Year Limited Warranty

<sup>1</sup>At 12VDC

- Accommodates 5/8" (16mm) latch projection
- 1/8" (3.2mm) horizontal adjustment
- 1-1/2" (38mm) cut-out depth
- Use with wide range of door thicknesses 1-3/8" to 2-3/8" (35mm-60mm)
- Mounting tabs, fasteners and trim plate included
- Non-handed
- Brushed Stainless Steel (32D) finish
- UL 1034 burglary-resistant Listed



### How To Order

		Voltage			
		Fail-Secure	Fail-Safe		
		11-16VAC	12VDC	01	05D
		24VAC	24VDC	07	08D
			12VDC	06	
			24VDC	09	
	7			x	32D
Fail-Secure	1	04	- 1-1/4"W x 4-7/8"H (32mm x 124mm), ANSI round corners		
Fail-Safe	3	05	- 1-1/8"W x 5-7/8"H (29mm x 150mm), round corners		
Mode		07	- 1-1/4"W x 6-7/8"H (32mm x 175mm), round corners		
		08	- 1-7/16"W x 7-15/16" (37mm x 202mm), round corners		
		14	- 1-1/4"W x 4-7/8"H (32mm x 124mm), ANSI square corners		
		19	- 1-3/8"W x 9"H (34mm x 228mm), square corners		

### Faceplate

Example: **7104-05D x 32D**

### Accessories

Model	Description
BXES2	Weldable box
4/7JIG	Standard profile frame prep jig, aluminum
LEK01	1" lip extension kit for retrofit applications, black finish
LEK02	2" lip extension kit for retrofit applications, black finish
LEK03	3" lip extension kit for retrofit applications, black finish
SMT-01	Strike marketing template kit, aluminum
TP-47-5PK	Trim plates, 5 pack, black finish





## 12C Compact Strike

A versatile strike suitable for all types of door frames.  
1-13/16"W x 2-3/4"H x 1-1/8"D (46mm x 70mm x 28mm)



Energy  
90mA  
12VDC



Strength  
1100lb Static  
44ft-lb Dynamic



Mode  
Field-Selectable  
Fail-Secure & Fail-Safe



Warranty  
1 Year Limited Warranty

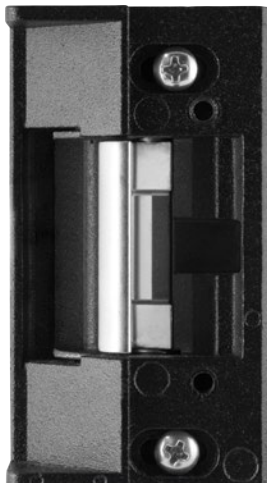
- Quick and easy install
- Ideal for wooden, steel & aluminum frames
- Non-handed
- Versatile, compact design
- Replaces standard, non-electrified T-strikes
- Maintains integrity and strength of the door frame
- Brushed Stainless Steel (32D) finish

### How To Order

12C x 32D



## Electric Strikes



## Modular Strike Inserts

Includes Lip Bracket & Hardware Pack

### 4 Series

How To Order

		Voltage	
Fail-Secure		11-16VAC	01
		12VAC/VDC	05
		24VAC/VDC	08
Fail-Safe		12VDC	06
		24VDC	09
A	4		-
		1	- Fail-Secure
		3	- Fail-Safe

Mode  
Example: **A41-05**

### 6 Series

How To Order

		Options	
A	65	LMKM	- Latch And Keeper Monitor
		S	- Standard
	L		- Low Profile
<b>Profile</b>			

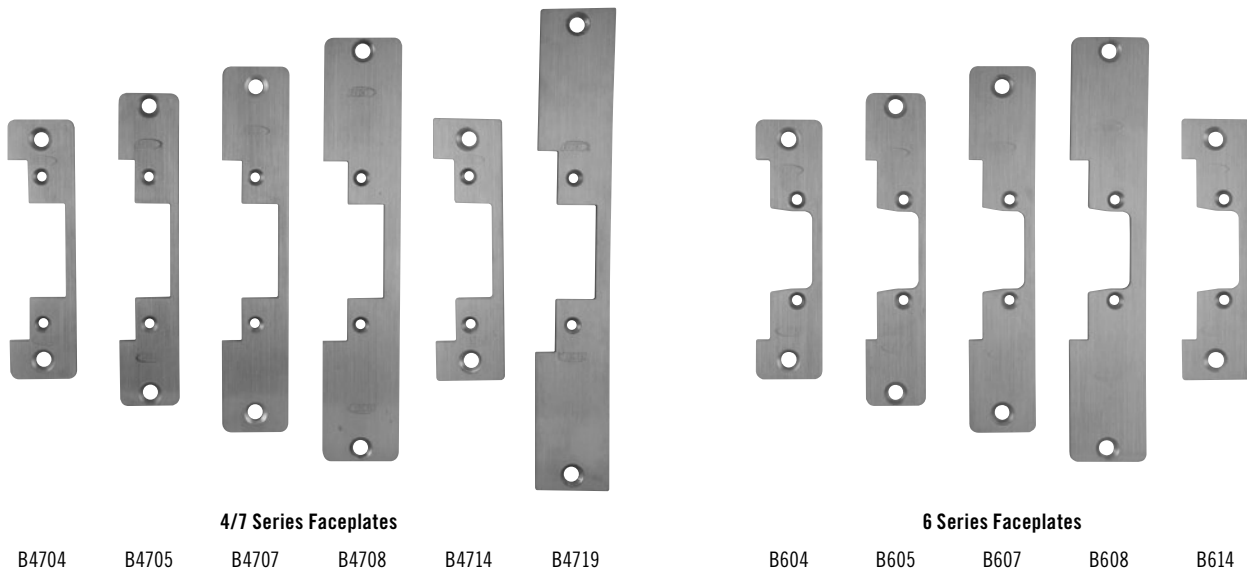
Example: **AL65LMKM**

### 7 Series

How To Order

		Voltage	
Fail-Secure		11-16VAC	01
		12VDC	05D
		24VAC	07
Fail-Safe		24VDC	08D
		12VDC	06
		24VDC	09
A	7		-
		1	- Fail-Secure
		3	- Fail-Safe

Mode  
Example: **A71-05D**


**4/7 Series Faceplates**

B4704    B4705    B4707    B4708    B4714    B4719

**6 Series Faceplates**

B604    B605    B607    B608    B614

# Modular Strike Faceplates

## 4/7/6 Series

### How To Order

		Series	
		6	-6 Series
		47	-4 & 7 Series
B		-	32D
	04	-	-1-1/4"W x 4-7/8"H (32mm x 124mm), ANSI Round Corner
	05	-	-1-1/8"W x 5-7/8"H (29mm x 150mm), Round Corners
	07	-	-1-1/4"W x 6-7/8"H (32mm x 175mm), Round Corners
	08	-	-1-7/16"W x 7-15/16"H (37mm x 202mm), Round Corners
	14	-	-1-1/4"W x 4-7/8"H (32mm x 124mm), ANSI Square Corners
	19	-	-1-3/8"W x 9"H (34mm x 228mm), Square Corners <sup>1</sup>
<b>Faceplate</b>			

 Example: **B4707-32D**
<sup>1</sup>Only available with 4 & 7 series


**Electric Strikes**

## Accessories



### Double Door Housing

Ideal for double door applications with no center mullion. Door housing is mounted on the inactive door.

Model	Description	Compatible With
0161DDH	Double door housing for 0161	0161
0162DDH	Double door housing for 0162	0162
0563DDH	Double door housing for 0563	0563



### Frame Prep Jigs

Aids in cutting of aluminum or metal frames, improving accuracy.

Model	Description	Finish	Compatible With
4/7JIG	Frame prep jig for ANSI-sized electric strike	Aluminum	4104/4304, 4114/4314, 7104/7304, 7114/7314
S6JIG	Standard profile frame prep jig	Aluminum	S6504, S6514
L6JIG	Low profile frame prep jig	Aluminum	L6504, L6514



### Ice Pack

Heat reducer for continuous duty electric strikes. Operating voltage – 12 to 30VDC.

Model	Description / Dimensions	Compatible With
ICEPK	Heat reducer for continuous duty electric strikes	0/F1/2/4/6/7 Series



### Latch Guards

Added tamper-resistance for perimeter doors. Helps guard the latch from a prying attack. Designed with radius cut for easy installation around lockset roses.

Model	Description	Finish	Compatible With
930-LG	Standard profile latch guard	32D	4/7 Series
940-LG	High profile latch guard	32D	F2/6/F1 Series



### Lip Bracket Extension

Ideal for center-hung doors. Allows electric strike to be installed in frame and protects frame from damage.

Model	Description / Dimensions	Finish	Compatible With
LEK01	1" Lip extension kit for retrofit	Black	4/7 Series
LEK02	2" Lip extension kit for retrofit	Black	4/7 Series
LEK03	3" Lip extension kit for retrofit	Black	4/7 Series
LEKS601	1" Lip extension kit for retrofit (standard)	Black	S6 Series
LEKS602	2" Lip extension kit for retrofit (standard)	Black	S6 Series
LEKS603	3" Lip extension kit for retrofit (standard)	Black	S6 Series
LEKL601	1" Lip extension kit for retrofit (low profile)	Black	L6 Series
LEKL602	2" Lip extension kit for retrofit (low profile)	Black	L6 Series
LEKL603	3" Lip extension kit for retrofit (low profile)	Black	L6 Series



### Mounting Spacer Kits

Ideal for increasing latch depth.

Model	Description	Compatible With
0162MSK	1/16" mounting spacer for additional latch engagement	0162, 0563

## Accessories Cont'd



### Strike Marking Template Kit

Ideal for accurately guiding prepping of the frame for the installation.

Model	Description	Finish	Compatible With
SMT-01	Strike Marking Template Kit	Aluminum	4/6/7 Series



### Trim Plates

Ideal for concealing any imperfections caused while prepping the frame cut out.

Model	Description	Finish	Compatible With
TP-47-5PK	Trim Plate - 5 Pack	Black	4/7 Series
TP-L6-5PK	Low profile Trim Plate - 5 Pack	Black	6 Series
TP-S6-5PK	Standard profile Trim Plate - 5 Pack	Black	6 Series



### Weldable Box

Ideal for welding onto surfaces that are not already designed to accommodate an electric strike. Most commonly used on gates.

Model	Description	Finish	Compatible With
BXES2	Weldable Box	Steel	4104/4304, 4114/4314, 7104/7304, 7114/7314



### 5 Series Cover Plate

Cutout cover plate for 5 Series cylindrical electric strikes.

Model	Description	Finish	Compatible With
5CP	Cutout cover plate	32D	5 Series



### 2 Series Plug-In Latch Monitor

Latch monitor plug-in kit (2A @ 24VDC).

Model	Description	Compatible With
F2LM	Plug-in latch monitor kit (2A @ 24VDC), only compatible with 3/4" (19mm) latch throw	F2164



### 2 Series Filler Plate

Filler plate (for use when replacing discontinued 2 Series models).

Model	Description	Compatible With
2FP	Filler plate for use when replacing discontinued 2 Series models	F2164/2364

## Strike Cross Reference

RCI	HES	Allegion	Folger Adam	Adams Rite	Trine
	<b>0161</b>	-	6112	310-4	EN800
<b>0 Series</b>	<b>0162</b>	9600	-	-	4800
<b>Rim Strikes</b>	<b>F0162</b>	9500	6300	-	-
	<b>0563</b>	9400	-	-	4850
<b>F1 Series</b>	<b>F1114</b>	7501	6211	712-75	-
<b>Fire-Rated Centerline Strikes</b>	<b>F1119</b>	-	6215	310-2	-
<b>2 Series</b>	<b>F2164/2364</b>	1006CS	6400	742-75	4100
<b>All-In-One Strikes</b>	<b>4104/4304</b>	5200-501A	-	-	7160
	<b>4105/4305</b>	-	-	-	-
	<b>4107/4307</b>	5200-503	-	-	1403 1703 3403
<b>4 Series</b>	<b>4108/4308</b>	5200-502	-	-	1404 3404
<b>Centerline Strikes</b>	<b>4114/4314</b>	5200-501	4211	-	7170
	<b>4119/4319</b>	-	6200	310-2	-
	<b>F4104</b>	4500	-	712-75	-
	<b>F4114</b>	4500	-	712-75	7270
	<b>5114/5314</b>	8000	-	-	3478
<b>5 Series</b>	<b>F5114</b>	8300	-	-	-
<b>Cylindrical Strikes</b>	<b>S/L6504</b>	5000-501A 5200-501A	5100	-	-
	<b>S/L6505</b>	-	-	-	-
	<b>S/L6507</b>	5000-503 5200-503	-	-	-
<b>6 Series</b>	<b>S/L6508</b>	5000-502 5200-502	5100	-	-
<b>Centerline Strikes</b>	<b>S/L6514</b>	5200-501 5000-501	5100 4200	-	-
	<b>S/L65U</b>	-	5100	-	-
	<b>7104/7304</b>	5000-501A 5200-501A	5100	712	7100
	<b>7105/7305</b>	-	-	-	-
	<b>7107/7307</b>	5000-503	-	-	7130
<b>7 Series</b>	<b>7107/7108</b>	5000-502	5100	-	7110
<b>Centerline Strikes</b>	<b>7114/7314</b>	5000-501	5100 4212	712	7140
	<b>7119/7319</b>	-	6200	310-2	-
<b>Compact Strikes</b>	<b>12C</b>	-	-	-	323478LC

# **KEYPADS & READERS**



## Keypads & Readers

# 125kHz Proximity Readers

Using RFID technology, RCI readers interface with a wide range of electronic access control systems by complying with the Wiegand communication protocol.



**Interface**  
26-Bit, Wiegand Output,  
HID® & AWID® Supported



**Environment**  
Rugged, Weather-Resistant  
Design



**Access Control**  
Listed To UL 294



**Warranty**  
Lifetime Limited Warranty

- Electronics are sealed in tamper and weather-resistant epoxy potting
- Includes black & beige snap-on covers
- Certifications: UL294 Listed for Access Control Unit Accessory, FCC, ICC, CE, ETL<sup>1</sup>



<sup>1</sup>Certifications do not apply to Reader & UNO kits (5355R-UNO, 5395R-UNO & 6005R-UNO)

### Options

#### -UNO – Reader + UNO Kits

125kHz readers are available individually or in kits that include:

- Reader (5355R, 5395R or 6005R)
- UNO Single-Door Standalone Controller
- Six programming cards (add, delete, door open time, refresh, user & shadow)



## 5355R

### Proximity Reader & Keypad Combo

Ideal for dual authentication or simple access via PIN or credential applications.  
3"W x 4-5/8"H x 3/4"D (76mm x 117mm x 19mm)



**Energy**  
110mA<sup>1</sup>, +5 – 16VDC



**Frequency & Range**  
125kHz, Up to 5" (127mm)<sup>2</sup>

#### How To Order

5355R  -UNO -Reader + UNO  
**Options**

<sup>1</sup>Max at 12VDC

<sup>2</sup>Using 1326R Proximity Card (Clamshell) with 12VDC at the reader



## 5395R

### Proximity Reader

Compact design ideal for single gang wall-box applications.  
3"W x 4-5/8"H x 3/8"D (76mm x 117mm x 10mm)



**Energy**  
75mA<sup>1</sup>, +5 – 16VDC



**Frequency & Range**  
125kHz, Up to 6-1/2" (165mm)<sup>2</sup>

#### How To Order

5395R  -UNO -Reader + UNO  
**Options**



## 6005R

### Mullion Proximity Reader

Slim design ideal for areas with minimal surface space to mount.  
1-11/16"W x 3-3/16"H x 11/16"D (43mm x 80mm x 17mm)



**Energy**  
75mA<sup>1</sup>, +5 – 16VDC



**Frequency & Range**  
125kHz, Up to 5" (127mm)<sup>2</sup>

#### How To Order

6005R  -UNO -Reader + UNO  
**Options**





# UNO Single-Door Standalone Controller

Designed for standalone and future system integration applications.  
1-3/16"W x 2-9/16"H x 11/16"D (30mm x 66mm x 17mm)



Energy  
10mA<sup>1</sup>  
12VDC



Users  
Supports  
Up To 1,000



Interface  
Wiegand & REX Input



Warranty  
1 Year Limited Warranty

<sup>1</sup>Typical, 60mA max

- For single gang wall-box or flat surfaces
- Field-selectable NO or NC output
- Programmable door open time
- Bi-color LED indicator
- To be located on secure side of door to avoid tampering

### Options

#### Reader + UNO Kits

Sold individually or in a kit with our 125kHz readers:  
5355R-UNO • 5395R-UNO • 6005R-UNO

### How To Order

	UNO
5355R-	– 5355R + UNO
5395R-	– 5395R + UNO
6005R-	– 6005R + UNO

**Options**



# 125kHz Proximity Cards & Fobs

Passive proximity cards and fobs for physical access control.



Frequency & Range  
125kHz  
Up to 6-1/2" (165mm)<sup>1</sup>



Interface  
26-Bit, Wiegand,  
HID® & AWID® Supported



## 1326R Clamshell Card

2-3/16"W x 3-3/8"H x 1/16"D  
(56mm x 86mm x 1.5mm)

- Up to 5-1/2" (140mm) read range
- Made of ABS
- Off-white finish
- Lifetime limited warranty



## 1386R Printable Card

2-1/16"W x 3-3/8"H x 1/32"D  
(53mm x 86mm x 0.79mm)

- Up to 5" (127mm) read range
- Made of PVC
- Glossy white finish
- 1 year limited warranty



## 1314R Thick Printable Card

2-1/16"W x 3-3/8"H x 1/16"D  
(53mm x 86mm x 1.17mm)

- Up to 6-1/2" (165mm) read range
- Made of PVC
- Glossy white finish
- Lifetime limited warranty



## 1346R Proximity Fob

1-1/2"W x 1-3/16"H x 1/8"D  
(38mm x 30mm x 3.8mm)

- Up to 4-1/2" (114mm) read range
- Made of ABS
- Gray finish
- Lifetime limited warranty

<sup>1</sup>Using 5395R Proximity Reader at 12VDC

### How To Order

Card Type		Quantity	
26	– Clamshell	10	– 10 Pack
86	– Printable	25	– 25 Pack
14	– Thick Printable	50	– 50 Pack
46	– Fob		
13	R		
	H		– Certain HID®
	A		– Certain AWID®

**Supported Data Protocol!**

<sup>1</sup>RCI protocol standard, must specify HID® or AWID® if required



## Keypads & Readers



### 9325 Keypads

Single door standalone access control solution for surface-mount applications.  
2-3/4"W x 4-1/2"H x 1-5/32"D (70mm x 115mm x 29mm)



Energy  
200mA Max  
12VDC



Environment  
Rugged, Weather-Resistant  
Model Available



Mode  
Field-Selectable  
Fail-Safe & Fail-Secure



Users  
Supports Up To 120 Users



Warranty  
2 Year Limited Warranty

- Supports up to 120 users
- EEPROM memory ensures programming remains intact when unit is not powered
- Secure access codes (4-8 digits)
- Backlighting (can be disabled)
- Silent mode (audible annunciation of key presses can be disabled)
- Programmable lockout
- Variable output time delay (1-60 sec.)
- Input trigger for request-to exit or other open circuit contact
- Black finish

#### How To Order

		Type
	i	Interior
	e	Exterior
9325		



# 9212 Keypads

Single door standalone access control solution for single gang flush mount applications.



## 9212i Keypad

For interior use.

2-3/4"W x 4-1/2"H x 1-1/4"D (70mm x 114mm x 32mm)



Energy  
45mA<sup>1</sup>  
Field-Selectable 12-24VAC/VDC

<sup>1</sup>Max at 24VDC



Interface  
EEPROM Memory



Environment  
Rugged, Weather-Resistant  
Model Available



Mode  
Field-Selectable  
Fail-Safe & Fail-Secure



Users  
Supports Up To  
120 Users



Warranty  
2 Year Limited  
Warranty

### Common Features

- Supports up to 120 users
- EEPROM memory ensures programming remains intact when unit is not powered
- Single gang flush-mount design
- Secure access codes (4-8 digits)
- Silent mode (audible annunciation of key presses can be disabled)
- Electronics mounted on back of keypad
- Input trigger for request-to-exit or other open circuit contact
- Three LED's to indicate status and provide user with visual PIN entry confirmation
- Red/Green LED's indicates relay status
- Stainless steel faceplate

### How To Order

	Type
i	— Interior
iLW	— Interior or Exterior Illuminated
9212	

## 9212iLW Illuminated Keypad

For interior or exterior use.

3-3/8"W x 5-1/8"H x 5/8"D (86mm x 130mm x 16mm)



Energy  
198mA<sup>1</sup>  
Auto-Sensing 12-24VAC/VDC

<sup>1</sup>Max at 24VDC

### 9212i Features

- Four independent outputs (assignable by code) and timers
- All outputs programmable for latched or timed operation

### 9212iLW Features

- Backlit, hardened keys
- Heavy chrome plated trim ring
- Key press feedback via sounder and yellow LED
- Built-in assignable sounder
- Programmable lockout



## Keypads & Readers

# Easy Read-Prox® Slimline Readers

Single-door standalone access control solution for surface or mullion mount for interior or exterior use.  
1-1/2"W x 3-1/16"H x 1/2"D (38mm x 78mm x 12.5mm)



## 9320 Reader + Controller One Self-Contained Unit

## 9321 Reader + Controller Two Separate Components



Energy  
1000mA<sup>1</sup>  
12VDC



Read Range  
Up To 2-3/8" (60mm)<sup>2</sup>



Environment  
Rugged, Weather-Resistant Design



Mode  
Field-Selectable  
Fail-Safe & Fail-Secure



Users  
Supports Up To  
10,000 Users



Warranty  
2 Year Limited Warranty

<sup>1</sup>Max

<sup>2</sup>Using 932-10CP Card, 1-9/16" (40mm) using 932-10KP Fob

- Easy to install
- Supports up to 10,000 users
- Aesthetically pleasing surface or mullion mount design
- Access validation – Silent<sup>3</sup>/Audible/Visual
- Deny access without retrieving user's card or fob
- No separate programmer required
- Input trigger for request-to exit or other open circuit contact
- Includes black & white snap-on covers
- Proximity cards and fobs are available in packs of 10 (sold separately)

### How To Order

#### Type

0	– Reader + Controller (One Self-Contained Unit)
1	– Reader + Controller (Two Separate Components)
1SPB	– Reader Only (No Control Board)

932

### Accessories

Model	Description
932-10CP	Encoded card starter pack, 10 pack, includes wallet and programming cards
932-10KP	Encoded fob starter pack, 10 pack, includes wallet and programming cards

<sup>3</sup>9320 only. Does not apply to 9321.



# Easy Read-Prox<sup>®</sup> Micro Readers

Single door standalone access control solution for flush mount applications for interior or exterior use.  
1-3/16"W x 1-7/8"H x 5/16"D (29.5mm x 48mm x 8.5mm)



## 9322 Reader + Controller One Self-Contained Unit



## 9323 Reader + Controller Two Separate Components



Energy  
1000mA<sup>1</sup>  
12VDC



Read Range  
Up To 2-3/8" (60mm)<sup>2</sup>



Environment  
Rugged, Weather-Resistant Design



Mode  
Field-Selectable  
Fail-Safe & Fail-Secure



Users  
Supports Up To  
10,000 Users



Warranty  
2 Year Limited Warranty

<sup>1</sup>Max  
<sup>2</sup>Using 932-10CP Card, 1-9/16" (40mm) using 932-10KP Fob

- Easy to install
- Supports up to 10,000 users
- Aesthetically pleasing flush mount design
- Access validation – Silent<sup>3</sup>/Audible
- Deny access without retrieving user's card or fob
- No separate programmer required
- Input trigger for request-to-exit or other open circuit contact
- Includes black & white snap-on covers
- Proximity cards and fobs are available in packs of 10 (sold separately)

### How To Order

	Type
2	– Reader + Controller (One Self-Contained Unit)
3	– Reader + Controller (Two Separate Components)
3MP	– Reader Only (No Control Board)
932	

### Accessories

Model	Description
932-10CP	Encoded card starter pack, 10 pack, includes wallet and programming cards
932-10KP	Encoded fob starter pack, 10 pack, includes wallet and programming cards

<sup>3</sup>9322 only. Does not apply to 9323.



## Keypads & Readers

# **PUSH SWITCHES**

**PUSH** Switches**906 Handicap Pushbutton**

2-3/4" x 4-1/2" (70mm x 115mm)

Warranty  
2 Year Limited Warranty

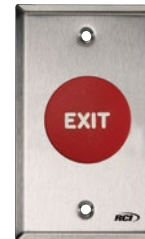
- Blue, 1-3/4" (44mm) diameter button
- Available with handicap symbol screen printed or blank
- Quickly mounts to single gang surface or recessed electrical box
- Hardware kit includes stainless steel tamper-proof screws and spanner bit
- Momentary (2-SPST), maintained (2-SPST) or time-delay (DPDT) switches available
- Brushed Stainless Steel (32D) faceplate
- See page 54 for accessories

**How To Order**

		Type					
		BH	– Handicap Symbol				
		B	– Blank				
906	-	-	-	x	32D		
		Momentary		MO			
		Maintained		MA			
		Time-Delay		TD			
		<b>Switch Mode</b>					

**908 Exit Pushbutton**

2-3/4" x 4-1/2" (70mm x 115mm)

Warranty  
2 Year Limited Warranty

- Red, black or green, 1-9/16" (40mm) diameter button
- Available with engraved "EXIT" (English, French or Spanish) or blank
- Quickly mounts to single gang surface or recessed electrical box
- Hardware kit includes stainless steel tamper-proof screws and spanner bit
- Momentary (2-SPST), maintained (2-SPST) or time-delay (DPDT) switches available
- Brushed Stainless Steel (32D) faceplate
- See page 54 for accessories

**How To Order**

		Type					
		E	– "EXIT", English				
		F	– "EXIT", French				
		S	– "EXIT", Spanish				
		B	– Blank				
908	-	-	-	x	32D		
		Momentary		MO			
		Maintained		MA			
		Time-Delay		TD			
		<b>Switch Mode</b>					

<sup>1</sup>Standard**916 Tamper-Resistant Handicap Pushbutton**Standard: 3"W x 4-3/4"H (76mm x 121mm)  
Narrow: 1-5/8"W x 4-3/4"H (41mm x 121mm)Warranty  
2 Year Limited Warranty

- Blue, 1-3/4" (44mm) diameter button
- Available with handicap symbol screen printed or blank
- Quickly mounts to single gang box (Standard) or narrow-stile door frames (Narrow)
- Extruded aluminum 1/4" (6.4mm) plate with beveled edges for tamper-resistance and durability
- Hardware kit includes stainless steel tamper-proof screws and spanner bit
- Momentary (2-SPST), maintained (2-SPST) or time-delay (DPDT) switches available
- Faceplate available in Brushed Anodized Aluminum (28) or Brushed Anodized Dark Bronze (40)
- See page 54 for accessories

**How To Order**

		Type		Switch Mode			
		BH	– Handicap Symbol	MO	– Momentary		
		B	– Blank	MA	– Maintained		
				TD	– Time-Delay		
916	-	-	-	x			
Narrow	N	Brushed Anodized Aluminum <sup>1</sup>		28			
<b>Options</b>		Brushed Anodized Dark Bronze		40			
		<b>Faceplate Finish</b>					

<sup>1</sup>Standard**918 Tamper-Resistant Exit Pushbutton**Standard: 3"W x 4-3/4"H (76mm x 121mm)  
Narrow: 1-5/8"W x 4-3/4"H (41mm x 121mm)Warranty  
2 Year Limited Warranty

- Red or green, 1-9/16" (40mm) diameter button with LED bulb
- Available with engraved "EXIT" (English, French or Spanish) or blank
- Quickly mounts to single gang box (Standard) or narrow-stile door frames (Narrow)
- Extruded aluminum 1/4" (6.4mm) plate with beveled edges for tamper-resistance and durability
- Hardware kit includes stainless steel tamper-proof screws and spanner bit
- Momentary (2-SPST), maintained (2-SPST) or time-delay (DPDT) switches available
- Faceplate available in Brushed Anodized Aluminum (28) or Brushed Anodized Dark Bronze (40)
- See page 54 for accessories

**How To Order**

		Type		Switch Mode			
		R	– "EXIT", English	MO	– Momentary		
		G	– "EXIT", Spanish	MA	– Maintained		
			– Blank	TD	– Time-Delay		
918	-	-	-	x			
Narrow	N	"EXIT", English	E	Brushed Anodized Aluminum <sup>1</sup>	28		
<b>Options</b>		"EXIT", French	F	Brushed Anodized Dark Bronze	40		
		"EXIT", Spanish	S	<b>Faceplate Finish</b>			
		Blank	B	<b>Type</b>			

<sup>1</sup>Standard



**990 Oversized Tamper-Resistant Handicap Pushbutton**  
3"W x 4-3/4"H (76mm x 121mm)



Warranty  
2 Year Limited Warranty



- Blue, 2-3/8" (60mm) diameter button
- Available with handicap label or blank
- Quickly mounts to single gang surface or recessed electrical box or narrow-stile door frames (Narrow)
- Extruded aluminum 1/4" plate with beveled edges for tamper-resistance and durability
- Hardware kit includes stainless steel tamper-proof screws and spanner bit
- Momentary (2-SPST), maintained (2-SPST) or time-delay (DPDT) switches available
- Faceplate available in Brushed Anodized Aluminum (28) or Brushed Anodized Dark Bronze (40) finish
- See page 54 for accessories

**How To Order**

		Type		Switch Mode	
		Handicap Symbol – BH	Blank – B	MO – Momentary	MA – Maintained
				TD – Time-Delay	
990					x
Narrow	N	Brushed Anodized Aluminum <sup>1</sup>			28
Options		Brushed Anodized Dark Bronze			40
		<b>Faceplate Finish</b>			

<sup>1</sup>Standard

**990 Oversized Tamper-Resistant Exit Pushbutton**  
3"W x 4-3/4"H (76mm x 121mm)



Warranty  
2 Year Limited Warranty



- Red or green, 2-3/8" (60mm) diameter button
- Available with "EXIT" label (English, French or Spanish) or blank
- Quickly mounts to single gang surface or recessed electrical box
- Extruded aluminum 1/4" plate with beveled edges for tamper-resistance and durability
- Hardware kit includes stainless steel tamper-proof screws and spanner bit
- Momentary (2-SPST), maintained (2-SPST) or time-delay (DPDT) switches available
- Faceplate available in Brushed Anodized Aluminum (28) or Brushed Anodized Dark Bronze (40) finish
- See page 54 for accessories

**How To Order**

		Color		Switch Mode	
		Red <sup>1</sup> – R	Green – G	MO – Momentary	MA – Maintained
				TD – Time-Delay	
990					x
Narrow	N	"EXIT", English	E	Brushed Anodized Aluminum <sup>1</sup>	28
Options		"EXIT", French	F	Brushed Anodized Dark Bronze	40
		"EXIT", Spanish	S	<b>Faceplate Finish</b>	
		Blank – B	B		
		<b>Type</b>			

<sup>1</sup>Standard

**991 Pneumatic Time Delay Handicap Pushbutton**

Standard: 3"W x 4-3/4"H (76mm x 121mm)  
Narrow: 1-3/4"W x 4-3/4"H (41mm x 121mm)



Warranty  
2 Year Limited Warranty



- Blue, 1-5/8" (41mm) diameter button with engraved handicap symbol
- Tamper-resistant, cannot be burned or pried off
- Quickly mounts to single gang box (Standard) or narrow-stile door frames (Narrow)
- UL 508 recognized microswitch
- 1-45 seconds adjustable time delay
- Made in the USA
- Brushed Stainless Steel (32D) faceplate
- See page 54 for accessories

**How To Order**

		Options	
		N – Narrow	
991		H	- PTD x 32D

**991 Pneumatic Time Delay Exit Pushbutton**

Standard: 3"W x 4-3/4"H (76mm x 121mm)  
Narrow: 1-3/4"W x 4-3/4"H (41mm x 121mm)



Warranty  
2 Year Limited Warranty



- Red, 1-5/8" (41mm) diameter button with engraved "PUSH TO EXIT"
- Tamper-resistant, cannot be burned or pried off
- Quickly mounts to single gang box (Standard) or narrow-stile door frames (Narrow)
- UL 508 recognized microswitch
- 1-45 seconds adjustable time delay
- Made in the USA
- Brushed Stainless Steel (32D) faceplate
- See page 54 for accessories

**How To Order**

		Options	
		N – Narrow	
991			- PTD x 32D
		E – Push to Exit	
		B – Blank	
		<b>Type</b>	

**PUSH** Switches**919 Rotary Release Pushbutton**

3" x 3/4" (76mm x 121mm)

Warranty  
2 Year Limited Warranty

- Red, 1-3/4" (44mm) diameter button
- Quickly mounts to single gang surface or recessed electrical box
- Push the button once to engage; twist cap in direction of arrows to release
- Designed to prevent users from inadvertently re-engaging the lock
- Latching momentary action
- Button must be manually turned to reset
- Hardware kit includes stainless steel tamper-proof screws and spanner bit
- Maintained (2-SPST) switch operation
- Faceplate available in Brushed Anodized Aluminum (28) or Brushed Anodized Dark Bronze (40) finish
- See page 54 for accessories

**How To Order****Faceplate Finish**

Brushed Anodized Aluminum <sup>1</sup>	—	28
Brushed Anodized Dark Bronze	—	40
919	- MA x	

<sup>1</sup>Standard**917 Easy Touch Pushbutton**

2-3/4"W x 4-1/2"H (70mm x 115mm)

Warranty  
2 Year Limited Warranty

- Quickly mounts to single gang box, no mounting box required
- Handicap symbol and English, French and Spanish "Push to Exit" labels included
- Momentary switch operation (SPDT)
- Virtually infinite lifetime
- Totally weather-proof
- Solid state (no moving parts)
- Pressure sensitive
- Architecturally elegant design
- Hardware kit includes Allen head screws and wrench
- Brushed Anodized Aluminum (28) faceplate
- See page 54 for accessories

**How To Order**

917	-	MO	x	28
-----	---	----	---	----

**920 Emergency Release Keypad/Pushbutton**

2-3/4"W x 4-1/2"H (70mm x 115mm)

Warranty  
2 Year Limited Warranty

- Red, 1-9/16" (40mm) diameter button
- Quickly mounts to single gang surface or recessed electrical box
- Push the button once to engage; key required to reset
- Designed to prevent users from inadvertently re-engaging the lock
- Hardware kit includes stainless steel tamper-proof screws and spanner bit
- Maintained (2-SPST) switch operation
- Brushed Stainless Steel (32D) faceplate
- See page 54 for accessories

**How To Order**

920	-	MA	x	32D
-----	---	----	---	-----

**972 All-In-One Illuminated Pushbutton**

2-3/4"W x 4-1/2"H (70mm x 115mm)

Warranty  
2 Year Limited Warranty<sup>1</sup><sup>1</sup>Bulb and LED not included  
All-in-one button, reduces inventory SKU's

- Large 2" (51mm) square illuminated LED pushbutton
- Includes 2 messages, "Push to Exit" and "Exit" in English/Spanish or English/French; and a Handicap symbol
- Includes three colored lenses (green, red & clear)
- Quickly mounts to single gang box
- Hardware kit includes stainless steel tamper-proof screws and spanner bit
- Momentary switch operation (SPDT)
- Integrated 30 sec. fixed or adjustable delay timer option available
- SPDT switch is a UL recognized component
- ADA Compliant
- Brushed Stainless Steel (32D) faceplate
- See page 54 for accessories

**How To Order**

					<b>Options</b>	
					TD30	— 30 Sec. Fixed Timer
					TD30A	— 0-30 Sec. Adjustable Time
972	-		-	MO	x	32D
					ES	— English & Spanish
					EF	— English & French
					<b>Language</b>	

**970 Illuminated Exit Pushbutton**  
 Standard: 3"W x 4-3/4"H (76mm x 121mm)  
 Narrow: 1-5/8"W x 4-3/4"H (41mm x 121mm)



Warranty  
2 Year Limited Warranty



- Illuminated LED pushbutton
- Quickly mounts to single gang box (Standard) or narrow-stile door frames (Narrow)
- Extruded aluminum 1/4" (6mm) plate with beveled edges for tamper-resistance and durability
- Hardware kit includes stainless steel tamper-proof screws and spanner bit
- Momentary (2-SPST or 4-SPST), maintained (2-SPST or 4-SPST) or time-delay (DPDT) switches available
- 12 and 24VAC/VDC options available
- Optional audible alert add-on
- Blue (standard), yellow, green, red lens options
- Faceplate available in Brushed Anodized Aluminum (28) or Brushed Anodized Dark Bronze (40) finish
- See page 54 for accessories

**How To Order**

<b>Lens</b>		<b>Faceplate Finish</b>	
Blue <sup>1</sup>	B	Brushed Anodized Aluminum <sup>1</sup>	28
Yellow	Y	Brushed Anodized Dark Bronze	40
Green	G	<b>Options</b>	
Red	R	Audible Alert	A
970	-	-	x
<b>Narrow</b>	N	<b>Switch Mode</b>	
<b>Options</b>		Momentary	MO
		Maintained	MA
		2x Momentary	DMO
		2x Maintained	DMA
		Time-Delay	TD
		<b>Voltage</b>	
		12VDC	05
		24VDC	08

<sup>1</sup>Standard

**980 Economy Pushbutton**  
 2-3/4"W x 4-1/2"H (70mm x 115mm)



Warranty  
2 Year Limited Warranty



- Quickly mounts to single gang box
- Hardware kit includes stainless steel tamper-proof screws and spanner bit
- Momentary (SPST), maintained (SPST) or time-delay (DPDT) switches available
- White cap with black trim
- Brushed Stainless Steel (32D) faceplate
- See page 54 for accessories

**How To Order**

<b>Switch Mode</b>	
MO	— Momentary
MA	— Maintained
TD	— Time-Delay
980	- x 32D

**975 Illuminated Exit Pushbutton**  
 Standard: 3"W x 4-3/4"H (76mm x 121mm)  
 Narrow: 1-5/8"W x 4-3/4"H (41mm x 121mm)



Warranty  
2 Year Limited Warranty



- 1" (25mm) square illuminated LED pushbutton, green lens
- Quickly mounts to single gang box (Standard) or narrow-stile door frames (Narrow)
- Extruded aluminum 1/4" (6mm) plate with beveled edges for tamper-resistance and durability
- Hardware kit includes stainless steel tamper-proof screws and spanner bit
- 12 and 24VAC/VDC options available
- Faceplate available in Brushed Anodized Aluminum (28) or Brushed Anodized Dark Bronze (40) finish
- Momentary (2-SPST) or time-delay (DPDT) switches available
- See page 54 for accessories

**How To Order**

<b>Switch Mode</b>		<b>Voltage</b>	
Momentary	— MO	05	— 12VAC/VDC
Time-Delay	— TD	08	— 24VAC/VDC
975	-	-	x
<b>Narrow</b>	N	<b>Faceplate Finish</b>	
<b>Options</b>		Brushed Anodized Aluminum <sup>1</sup>	28
		Brushed Anodized Dark Bronze	40

<sup>1</sup>Standard

**903 Audible Alert Pushbutton**  
 3"W x 4-3/4"H (76mm x 121mm)



Warranty  
2 Year Limited Warranty



- For remote or local monitoring
- Quickly mounts to single gang box (Standard) or narrow stile door frames (Narrow)
- Extruded aluminum 1/4" (6mm) plate with beveled edges for tamper-resistance and durability
- Hardware kit includes stainless steel tamper-proof screws and spanner bit
- Push-on wire connectors included
- Field-selectable continuous or intermittent tone (80-96dB)
- 30mA, 10-26VDC
- Available in Brushed Anodized Aluminum (28) or Brushed Anodized Dark Bronze (40) finish
- See page 54 for accessories

**How To Order**

<b>Options</b>	
N	— Narrow stile
903	- x
<b>Faceplate Finish</b>	
Brushed Anodized Aluminum <sup>1</sup>	28
Brushed Anodized Dark Bronze	40

<sup>1</sup>Standard

## PUSH Switches

### 960 Tamper-Resistant Keyswitch

Standard: 3"W x 4-3/4"H (76mm x 121mm)  
Narrow: 1-5/8"W x 4-3/4"H (41mm x 121mm)  
Key cylinder sold separately.



Warranty  
2 Year Limited Warranty



- Quickly mounts to single gang box (Standard) or narrow-stile door frames (Narrow)
- Extruded aluminum 1/4" plate with beveled edges for tamper-resistance and durability
- One-piece bracket with two-position switch holder
- Compatible with standard mortise cylinders with straight or clover cams in 1-1/8" or 1-1/4" cylinder lengths (1-1/4" key cylinders available)
- Momentary (SPDT/DPDT), maintained (SPDT/DPDT) or time-delay (2-SPDT) switches available
- Hardware kit includes stainless steel tamper-proof screws and spanner bit
- Faceplate available in Brushed Anodized Aluminum (28) or Brushed Anodized Dark Bronze (40) finish

#### How To Order

		Options		Faceplate Finish			
				Brushed Anodized Aluminum <sup>3</sup>			28
				Brushed Anodized Dark Bronze			40
960	-	-	-			x	
Narrow-Stile	N	Momentary	MO	MO			Momentary
Options		Maintained	MA	MA			Maintained
		Time-Delay	TD				Options <sup>2</sup>
		Switch Mode					

<sup>1</sup>Only available with MO and MA switch mode

<sup>2</sup>Second switch

<sup>3</sup>Standard

#### Accessories

Model	Description
960CYLKA	Mortise cylinder, straight cam, keyed alike
960CYLKD	Mortise cylinder, straight cam, keyed differently

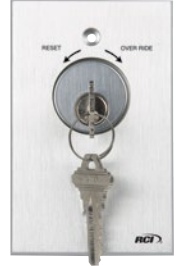
See page 54 for additional accessories

### 960RO Tamper-Resistant Keyswitch with Reset/Override

Standard: 3"W x 4-3/4"H (76mm x 121mm)  
Narrow: 1-5/8"W x 4-3/4"H (41mm x 121mm)  
Key cylinder sold separately.



Warranty  
2 Year Limited Warranty



- Quickly mounts to single gang box
- Extruded aluminum 1/4" plate with beveled edges for tamper-resistance and durability
- One-piece bracket with two-position switch holder
- Compatible with standard mortise cylinders with straight or clover cams in 1-1/8" or 1-1/4" cylinder lengths (1-1/4" key cylinders available)
- Momentary (SPDT/DPDT), maintained (SPDT/DPDT) or time-delay (2-SPDT) switches available
- Hardware kit includes stainless steel tamper-proof screws and spanner bit
- Screen-printed reset/override with directional arrows indicate the function of corresponding switch model
- Brushed Anodized Aluminum (28)

#### How To Order

		Options		Options <sup>2</sup>	
				MO	Momentary
				MA	Maintained
960RO	-	D	DPDT <sup>1</sup>	x	28
				MO	Momentary
				MA	Maintained
				TD	Time-Delay
		Switch Mode			

<sup>1</sup>Only available with MO and MA switch mode

<sup>2</sup>Second switch

#### Accessories

Model	Description
960CYLKA	Mortise cylinder, straight cam, keyed alike
960CYLKD	Mortise cylinder, straight cam, keyed differently

See page 54 for additional accessories

**904P Emergency Pull Station**  
3-9/16"W x 4-1/2"H (91mm x 114mm)



Warranty  
2 Year Limited Warranty



- Heavy-duty polycarbonate design with easy to lift clear Lexan cover
- All-in-one design includes English, French and Spanish labels to apply during installation
- Mounts over standard surface or recessed electrical utility box
- Maintained (DPDT) switch operation
- 3A at 125VAC
- Available in Blue or Yellow finish
- See page 54 for accessories

**How To Order**

904P	x	
Blue <sup>1</sup>	-	B
Yellow	-	Y
<b>Finish</b>		

<sup>1</sup>Standard

**909 Rocker Switch**

Surface-mount:  
2-7/16"W X 2-7/16"H x 7/8"D (61mm x 61mm x 22mm)  
Flush-mount:  
3-7/16"W x 3-7/16"H x 5/8"D (87mm x 87mm x 16mm)



Warranty  
2 Year Limited Warranty



- Ideal for desk mount applications
- Surface-mounts under desk or counter for concealment
- Smooth action rocker with key symbol
- Momentary (SPDT) and maintained (SPDT) switches available
- 10A at 250VAC
- Beige finish
- See page 54 for accessories

**How To Order**

		<b>Mount</b>			
	S	-	Surface		
	F	-	Flush		
909		-		x	B
			MO	-	Momentary
			MA	-	Maintained <sup>1</sup>
<b>Switch Mode</b>					

<sup>1</sup>Available in surface-mount design only

**913 Microwave Motion Switch**  
4-5/8"W x 4-5/8"H (117mm x 117mm) &  
2-3/4"W x 4-5/8"H (70mm x 117mm)



Warranty  
2 Year Limited Warranty



- Doppler radar technology allows for use in sterile environments (i.e. healthcare, food processing plants)
- It can be placed unobtrusively in a room or hallway when mounted behind a non-reflective surface for a clean non-visible solution
- Includes single and double gang plate
- Variable adjustment of pattern depth from 4" to 24" (102mm – 610mm)
- No wearing parts mean increased product life
- Water-resistant foam gasket provides increased durability when product is exposed to water or cleaning product
- 12 to 24 VDC/VAC
- Contact rated at 1A
- Available in Black, Cream or White finish
- Certifications: EMC, FCC, IC
- See page 54 for accessories

**How To Order**

		<b>Finish</b>	
	Black	-	B
	Cream	-	CR
	White	-	W
913	x		

**914 Sounder**

4-3/4"W x 5-9/16"H (119mm x 142mm)



Warranty  
2 Year Limited Warranty



- Ideal for delayed egress applications
- Field-selectable volume output up to 102db
- Models available for interior or exterior applications
- Not suitable for mounting on ceilings
- Easy installation - surface wall mounted
- 63mA, 12-24VAC
- Available in White or Red

**How To Order**

		<b>Type</b>	
	WPR	-	Weather-Proof, Red Finish
	W	-	White Finish
914			

<sup>1</sup>Only available in red finish

**PUSH Switches****915 Passive Infrared**

Hands-free egress switch.  
6-1/4"W x 1-13/32"H x 1-1/2"D  
(159mm x 36mm x 38mm)



Warranty  
2 Year Limited Warranty

- Field-Selectable 12/24VDC
- 38mA max at 24VDC, 35mA at 12VDC
- Hands free release for electromagnetic locks
- Ideal for "request to exit" with electromagnetic locks
- Adjustable setting for precise detection area desired
- Adjustable-relay latch time delay (2-60 sec)
- Two Form C relays (rated 2A at 30VDC)
- SPDT switch configuration
- Available in Gray or Black

**How To Order****Finish**

Black	—	B
Gray	—	G

915	x	
-----	---	--

**946 Square Push Plate**

4-1/2" Sq. (114mm)  
4-3/4" Sq. (121mm)  
6" Sq. (152mm)



Warranty  
Lifetime Limited Warranty

- Available in three sizes
- Momentary (SPDT) switch operation, DPDT options available
- Tamper-resistant
- Brushed Stainless Steel (32D) finish

**How To Order**

		Type				Finish	
		H	— Handicap Symbol			32D	— Brushed Stainless Steel
		HP	— Handicap Symbol + Push to Open			BLU	— Blue
946			-		MO	x	
4-1/2" — (114mm) <sup>1</sup>	45		D	— DPDT			
4-3/4" — (121mm)	475	<b>Options</b>					
6" (152mm) —	6						

<sup>1</sup>Only available with HP type

**Accessories**

Model	Description
9466SUR	Surface-mount box for 6" push plate
946475SUR	Surface-mount box for 4.75" push plate
94645SUR	Surface-mount box for 4.5" push plate
9466FLU	Flush mount box for 6" push plate
946475FLU	Flush mount box for 4.75" push plate
946475WR	Weather ring for 4.75" push plate
946DGPLATE	Back plate for double gang electrical box
9464PLAST	Double gang mount box

See page 54 for additional accessories

**915AFI Active Focused Infrared**

6-7/8"W x 1-7/8"H x 2"D (175mm x 48mm x 51mm)



Warranty  
3 Year Limited Warranty

- Mounts on or above the door frame with infrared beam directed near door hardware for pinpoint accuracy and operation, preventing circumvented entry by sliding objects under the door
- Multiple relocking modes for any timed or door position conditions
- Relay output consists of two Form "C" contacts for NO/NC wiring
- Integrated local sounder with adjustable volume and activation LEDs
- 3 additional auxiliary inputs: request to exit, card reader and a door position switch
- 12 to 24 VDC/VAC
- Black finish
- Certifications: UL 294/ULC S319

**How To Order**

915AFI	x	B
--------	---	---

**950 Round Push Plate**

4-1/2" Dia. (114mm)  
6" Dia. (152mm)



Warranty  
Lifetime Limited Warranty

- 4-1/2" buttons designed for 2" x 4" (51mm x 102mm) switch boxes and 6" buttons designed for 4" x 4" x 1-1/2" (102mm x 102mm x 38mm) junction boxes
- Available in two sizes
- Momentary (SPDT) switch operation, DPDT option available
- Tamper-resistant
- Brushed Stainless Steel (32D) finish

**How To Order**

		Type				Finish	
		H	— Handicap Symbol			32D	— Brushed Stainless Steel
		HP	— Handicap Symbol + Push to Open			BLU	— Blue
950			-		MO	x	
4-1/2" — (114mm)	45		D	— DPDT			
6" (152mm) —	6	<b>Options</b>					

**Accessories**

Model	Description
95045SUR	Surface-mount box for 4.5" push plate
9506SUR	Surface-mount box for 6" push plate
95045FLU	Flush mount box for 4.5" push plate
9506FLU	Flush mount box for 6" push plate
950ESC45	Escutcheons for 4.5" push plate
950ESC6	Escutcheons for 6" push plate
946DGPLATE	Back plate for double gang electrical box
9464PLAST	Double gang mount box

See page 54 for additional accessories



**PUSH** Switches**946T Square Short-Range Touchless Actuator**

4-3/4" Sq. (121mm)

Warranty  
Lifetime Limited Warranty

- Low-profile touchless actuator plate utilizing unique capacitive technology for the activation of automatic doors
- Illuminated LED mounting ring for unparalleled durability, visibility and convenience
- Hands-free – helps reduce the spread of germs and bacteria
- Short-range adjustable detection zone reduces unwanted activations
- Adjustable visual and audible alerts
- Field-selectable 12-24 VAC/VDC, 37mA typical
- NEMA 4-rated enclosure
- Made of stainless steel (faceplate) and clear polycarbonate (mounting ring, backplate and enclosure)
- Momentary (SPDT) switch operation
- Certifications & testing:
  - ANSI – American National Standards Institute
  - AAADM – American Association of Automatic Door Manufacturers
  - AIA – American Institute of Architects
  - FCC – Federal Communications Commission
  - IDA – International Door Association
  - DASMA – Door & Access Systems Manufacturers Association
  - NEMA 4 – National Electrical Manufacturers Association
- See page 54 for accessories

**How To Order**

		Type				
	H	– Handicap & Wave Symbol				
	HW	– Handicap & Wave Symbol & “Wave To Open”				
	W	– “Wave To Open” & Wave Symbol				
946T		475	-	MO	x	32D

**950T Round Short-Range Touchless Actuator**

6" Dia. (173mm x 152mm)

Warranty  
Lifetime Limited Warranty

- Low-profile touchless actuator plate utilizing unique capacitive technology for the activation of automatic doors
- Illuminated LED mounting ring for unparalleled durability, visibility and convenience
- Hands-free – helps reduce the spread of germs and bacteria
- Short-range adjustable detection zone reduces unwanted activations
- Adjustable visual and audible alerts
- Field-selectable 12-24 VAC/VDC, 37mA typical
- NEMA 4-rated enclosure
- Made of stainless steel (faceplate) and clear polycarbonate (mounting ring, backplate and enclosure)
- Momentary (SPDT) switch operation
- Certifications & testing:
  - ANSI – American National Standards Institute
  - AAADM – American Association of Automatic Door Manufacturers
  - AIA – American Institute of Architects
  - FCC – Federal Communications Commission
  - IDA – International Door Association
  - DASMA – Door & Access Systems Manufacturers Association
  - NEMA 4 – National Electrical Manufacturers Association
- See page 54 for accessories

**How To Order**

		Type				
	H	– Handicap & Wave Symbol				
	HW	– Handicap & Wave Symbol & “Wave To Open”				
	W	– “Wave To Open” & Wave Symbol				
950T		6	-	MO	x	32D

## PUSH Switches

### 940 Rectangular Push Plate

2-3/4"W x 4-1/2"H (70mm x 114mm)



Warranty  
Lifetime Limited Warranty



- Large rectangular faceplate
- Beveled edges provide a tamper and vandal resistant solution
- Universal touch area; push at any location
- Momentary (SPDT) switch operation, DPDT option available
- Text and symbols are baked onto the surface for maximum durability
- Brushed Stainless Steel (32D) finish

#### How To Order

		Type			
	H	– Handicap Symbol			
	HP	– Handicap Symbol + Push to Open			
	PTE	– Push to Exit			
	B	– Blank			
940		-		x	32D
			MO		– Momentary (SPDT) <sup>1</sup>
			DMO		– Momentary (DPDT)
					<b>Switch Mode</b>

<sup>1</sup>Standard

#### Accessories

Model	Description
940SUR	Surface-mount box

See page 54 for additional accessories

### 947 Dual Vestibule Push Plate

4-3/4"W x 4-3/4"H (121mm x 121mm)



Warranty  
Lifetime Limited Warranty



- Rather than having two push plates, the 947 provides an aesthetically pleasing solution to the vestibule application
- Conserves energy by only opening necessary doors
- Tamper-resistant
- An all-active plate activates with any "push" location
- Weather boot between plate and back plate for all weather applications
- Momentary (SPDT) switch operation
- Fits both single and double gang mounting boxes
- Brushed Stainless Steel (32D) finish

#### How To Order

947	HPA	-	MO	x	32D
-----	-----	---	----	---	-----

#### Accessories

Model	Description
946475SUR	Surface-mount box
946475FLU	Flush mount box
946DGPLATE	Back plate for double gang electrical box

See page 54 for additional accessories

### 941 Mullion Push Plate

1-1/2"W x 4-3/4"H (38mm x 121mm)



Warranty  
Lifetime Limited Warranty



- Narrow design makes an easy application on guide rails and swing doors
- Beveled edges provide a tamper and vandal resistant solution
- Universal touch area; push at any location
- Momentary (SPDT) switch operation
- Text and symbols are baked onto the surface for maximum durability
- Available in Brushed Stainless Steel (32D) or Blue (BLU) finish

#### How To Order

		Type				Finish	
	P	– Push To Open					
	H	– Handicap Symbol					
	HP	– Handicap Symbol + Push To Open				32D	– Brushed Stainless Steel Finish
	B	– Blank <sup>1</sup>				BLU	– Blue
941		-	MO	x			
			MICRO				– Micro-Switch <sup>2</sup>
							<b>Options</b>

<sup>1</sup>Available only in 32D finish

<sup>2</sup>Available only with HP and H type in 32D finish

#### Accessories

Model	Description
941SUR	Surface-mount box
941FLU	Flush mount box

See page 54 for additional accessories

### 9LP36 Low Profile Push Plate

6"W x 36"H (152mm x 915mm)



Warranty  
3 Year Limited Warranty



- An all-active plate activates with any "push" location
- Can be mounted to any flat surface using concealed fasteners for aesthetics and to minimize vandalism
- Easily adapts to either a wireless or hardwired installation
- Optional built-in wireless transmitter comes pre-installed in the top end cap
- UL Listed push plate for pedestrian door activation under UL325 for US and Canada
- Exceeds the California Building Code, Section 1117B.6
- Exceeds Ontario Building Code, Sections A-3.8.3.3 (17) and A-3.8.1.5
- Brushed Stainless Steel (32D) finish

#### How To Order

		Type			
	HW	– For Hardwire Installation			
	433	– For Wireless Installation (433MHz Transmitter)			
9LP36	-		x		32D



**9BOLL Bollard/Mounting Post**  
 6-1/4"W x 41-1/2"H x 4-1/4"D  
 (159mm x 1054mm x 108mm)



Warranty  
 3 Year Limited Warranty



- Constructed with durable carbon steel
- Designed to mount 4-3/4" square and 4-1/2" round push plates
- Can be mounted on either existing or newly poured concrete
- Stainless steel mounting bracket and hardware included
- UV-resistant ABS plastic top cap allowing for wireless transmitter installation
- Available in Silver, Bronze or Black finish

**How To Order**

		Options	
	NC	— Without Push Plate Cut Out	
9BOLL		PC	
		BL	— Black
		S	— Silver
		BR	— Bronze
		<b>Finish</b>	

**9RCT433/9DRCR433 Transmitters & Receivers**  
 2-3/4"W x 2-1/8"H x 1"D  
 (70mm x 55mm x 14mm)



Warranty  
 3 Year Limited Warranty



- Operates with a unique rolling code each time the switch is activated
- Multiple applications with Delay or No Delay programming
- 100 transmitters can be programmed into a single receiver
- Removal of a single transmitter code
- Up to 4 separate wireless receivers can be activated by a single transmitter (i.e. 4-Button)
- Red LED indicator on transmitter confirms transmission and battery life
- 3V or 9V battery power, for use with push plates and has the required terminals to adapt the switch terminals
- Certifications: FCC, IC, CE

**How To Order Transmitter**

9RCT433		
	1	— One Button
	2	— Two Buttons
	3	— Three Buttons
	4	— Four Buttons
	3V1	— One Button Wired With 3V Battery
	9V1	— One Button Wired With 9V Battery Lead
		<b>Type</b>

**How To Order Receiver**

9DRCR433		
	VB	— Receiver
	EHT	— Receiver With Extended Hold Time
		<b>Type</b>

**PUSH Switches****9500/9501 Mortise Pin Transfers**

1/2"W x 2-3/4"H (13mm x 71mm)

Warranty  
5 Year Limited Warranty

- Recessed in the hinge side of the door/frame and concealed when the door is closed for tamper-resistance
- 1.5A at 24VAC
- Made of nickel-plated brass and plastic
- White finish

**How To Order**

		Type
950	0	- 2 Pin Contact
	1	- 3 Pin Contact

**9500**  
2 Pin**9501**  
3 Pin**9503/9505 Ball Transfers**

1/2"W x 2-3/4"H (13mm x 71mm)

Warranty  
5 Year Limited Warranty

- Recessed or surface-mounted on either hinge side, lock side or frame header. Recessed models are concealed when the door is closed for tamper-resistance
- 500mA at 24VAC
- Contact pins are hard gold-plated (corrosion-free)
- White finish

**How To Order**

		Type
950	3	- Mortise
	5	- Surface

**9503**  
Mortise**9505**  
Surface**9507/9509 Flex Loops**Warranty  
2 Year Limited Warranty**9507**

- Surface-mounted on hinge side
- Accepts 4-conductor @ 22 gauge or 2-conductor @ 18 gauge (not included)
- Made of stainless steel coated brass
- Available in Silver, Brown and White finish

**9509**

- Surface-mounted on hinge side
- Heavy-duty flex loop with increased conductor capacity
- Accepts 16-conductor @ 22 gauge or 8-conductor @ 18 gauge (not included)
- Made of stainless steel
- Silver finish

**How To Order**

Type		Finish	
		Silver <sup>1</sup>	
Standard	7	Brown	B
Heavy-Duty	9	White	W
950	-		
	7" (178mm)	7	
	12" (305mm)	12	
	18" (457mm)	18	
	24" (610mm)	24	
	36" (914mm)	36	
<b>Length</b>			

<sup>1</sup>9509 available in Silver only**Electrified Hinges****9520** 4" x 4" (102mm x 102mm)**9521** 4-1/2" x 4" (114mm x 102mm)**9522** 4-1/2" x 4-1/2" (114mm x 114mm)**9523** 5" x 4-1/2" (127mm x 114mm)**9524** 5" x 5" (127 mm x 127mm)Warranty  
3 Year Limited Warranty

- Five knuckle
- Standard weight
- Fully mortised in the hinge stile and concealed when the door is closed for tamper-resistance
- Made of steel
- 6-conductors (4 at @ 22 gauge, 2 @ 18 gauge) included
- Available in Brushed Chrome (26D) or Brushed Stainless Steel (32D) finish

**How To Order**

		Size	
952	0	- 4" x 4" (102mm x 102mm)	
	1	- 4-1/2" x 4" (114mm x 102mm)	
	2	- 4-1/2" x 4-1/2" (114mm x 114mm)	
	3	- 5" x 4-1/2" (127mm x 114mm)	
	4	- 5" x 5" (127 mm x 127mm)	
	x		
	Brushed Chrome	-	26D
	Brushed Stainless Steel	-	32D
<b>Finish</b>			




**PUSH Switches**
**Bridge Cables****9512**

Visible face: 1"W x 12-3/4"H (25mm x 324mm)

Recessed: 7/8"W x 10-3/16"H (23mm x 259mm)

**9513**

Visible face: 1"W x 21-7/16"H (25mm x 545mm)

Recessed: 7/8"W x 18-7/8"H (23mm x 479mm)



Warranty  
1 Year Limited Warranty

- Recessed in the hinge side of the door/frame and concealed when door is closed for tamper-resistance
- 4-conductor @ 22 gauge or 2-conductor @ 18 gauge
- Made of steel
- Bright Chrome (26) finish

**How To Order**

		Type	
	2	-	12-3/4" H (324mm)
	3	-	21-7/16" H (545mm)
951		x	26

**9530 Balanced Magnetic Contact/Door Position Switch**

3-1/2"W x 1-1/4"H x 5/8"D

(89mm x 32mm x 16mm)



Warranty  
Lifetime Limited Warranty

- 50mA Max, 100VDC
- Surface-mount switch and magnet
- Utilizes two Form C high reliability Rhodium plated reed switches, one of the two reed switches being of different sensitivity, encapsulated in epoxy inside a solid aluminum case
- SPDT switch configuration with magnetic tamper
- When the rare earth magnet is in place and properly adjusted (balanced), the magnetic tamper switch 2 will be in a state opposite to the switch 1
- This normal configuration will change should one of the following occur; (1) switches 1 and 3 will change state by either the deliberate shunting of the magnetic field or if the door/window is opened, and (2) the addition of a magnetic field such as an external magnet will cause the magnetic tamper switch 2 to change state
- End-of-line resistors may be used to allow a predetermined trickle of current to flow and permit operation from a supervised line at all times
- 18" Armored Cable, #22 AWG Wire Leads

**How To Order**

9530

**9540 Recessed Magnetic Contact/Door Position Switch**

3/4"W x 3/4"H x 7/8"D

(19mm x 19mm x 22mm)



Warranty  
Lifetime Limited Warranty

- 200mA Max, 30VAC/VDC
- 3/4" (19mm) dia. recessed magnetic contact
- 12" #22 AWG wire leads
- Rare earth magnet
- Self-locking in steel and wood
- End-of-line resistors, diodes and supervisory
- Loop type: open/closed
- SPDT configuration
- Available in White or Black finish

**How To Order**

9540	x	
	White	W
	Black	B
	<b>Finish</b>	



**PUSH** Switches

## Accessories



### 9SURBOX Surface-Mount Single gang

Model	Description
9SURBOX	Surface-mount single gang box, Cream finish 3"W x 4-3/4"H x 2-1/2"D (76 x 121 x 63.5mm)



### TD30/TD30A Timer Delay

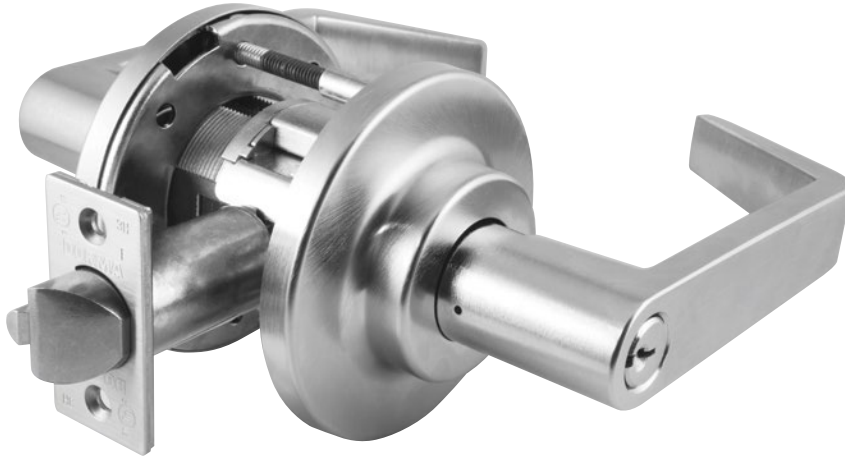
Model	Description
TD30	30 sec. fixed timer (12/24VDC)
TD30A	0 to 30 sec. adjustable timer (12/24VDC)

### Compatibility

Model	9SURBOX	TD30	TD30A
903 Audible Alert Pushbutton	•	—	—
904P Emergency Pull Station	•	—	—
906 Handicap Pushbutton	•	•	•
908 Exit Pushbutton	•	•	•
909 Rocker Switch	—	•	•
916 Tamper-resistant Handicap Pushbutton	•	•	•
917 Easy Touch Pushbutton	•	•	•
918 Tamper-resistant Exit Pushbutton	•	•	•
919 Rotary Release Pushbutton	•	—	—
920 Emergency Release Keyswitch/Pushbutton	•	—	—
940 Rectangular Push Plate	•	•	•
941 Mullion Push Plate	—	•	•
946 Square Push Plate	•	•	•
946T Square Short-Range Touchless Actuator	•	•	•
947 Dual Vestibule Push Plate	•	•	•
950 Round Push Plate	•	•	•
950T Round Short-Range Touchless Actuator	•	•	•
960 Tamper-resistant Keyswitch	•	•	•
970 Illuminated Exit Pushbutton	•	•	•
972 All-In-One Illuminated Pushbutton	—	•	•
975 Illuminated Exit Pushbutton	•	•	•
980 Economy Pushbutton	•	•	•
990 Oversized Tamper-resistant Handicap/Exit Pushbutton	•	•	•
991 Pneumatic Time Delay Handicap/Exit Pushbutton	•	•	•



# LOCKSETS



## C800 Series Grade 1 Heavy-Duty Cylindrical Locksets

Provides exceptional security, enhanced aesthetics and rugged dependability.



Energy  
290mA @ 12VDC  
145mA @ 24VDC



Fire-Rated  
3-Hour Fire-Rated



Strength  
ANSI/BHMA A156.2



Door Type  
Designed For Wood And  
Hollow Metal Doors



Mode  
Fail-Safe & Fail-Secure  
Options Available



Warranty  
2 Year Limited Warranty

- Easy to install in all swinging doors with ANSI/BHMA Standard A156.115 preparations for cylindrical locks
- Designed for wood and hollow metal doors
- Fail-safe (EL) and fail-secure (EU) options available
- Easily adjustable to accommodate doors from 1-3/4"–2-1/4" thick without spacers (1-3/8"–1-5/8" with spacers 660005). Consult the factory for other thicknesses
- Non-handed for simple installation (excluding LF or LV handed levers)
- Key-in-lever lock is through-bolted for additional strength and security
- Cast stainless steel latch retractor with roller bearings for exceptionally smooth operation and superior strength and durability
- Lock chassis constructed of steel, stainless steel and zinc components for superior strength and corrosion resistance
- Stainless steel latch bolt for superior strength
- Auxiliary deadlocking latch bolt for strength and durability
- Premium PVD (physical vapor deposition) finishes for consistent durable color on 605, 606, 612, 613 and 619
- Available in: 24VDC (145mA) & 12VDC (290mA)
- Request-to-exit signaling switch: 250VAC, 1A, 22AWG wire leads on lever locks
- Certified to ANSI/BHMA standard A156.2, Series 4000 Grade 1
- Tested to 3.5-million cycles by an independent laboratory
- Meets A117.1 accessibility code and ADA requirements for barrier-free accessibility
- UL/cUL – UL 10C Positive Pressure
- All C800 Series locks are Listed 3-hour fire rated
- Locks with 1/2" throw latch bolts are listed for A label and lesser class doors, 4'0" x 8'0" maximum per leaf
- California State Reference Code (formerly title 19, California State Fire Marshal standard), all levers with returns, return to within 1/2" (12 mm) of door face



# C800 Series Cont'd

## How To Order

Function		Cylinder Type <sup>1</sup>		Finish <sup>2</sup>		Latch Bolts <sup>5</sup>		Strike Options		Lip Length		Keying Options <sup>3</sup>	
Fail-Secure	80EU	S	-Sargent 10 Line KIL (less cylinder)	626	-Satin Chrome (Standard)								
		D	-Conventional Cylinder	625	-Bright Chrome								
		L	-Less Cylinder	619PVD	-Satin Nickel								
		C	-SFIC	613PVD	-Dark Oxidized Satin Bronze								
		J	-Less SFIC	612PVD	-Satin Bronze								
Fail-Safe	80EL	T	-Temporary SFIC	606PVD	-Satin Brass								
		R	-Schlage FSIC (less core)	605PVD	-Bright Brass	AM	-Antimicrobial Coating <sup>3</sup>						
<b>C8</b>												5001	1316
<b>Request to Exit</b>	<b>RX</b>	LR	C	-3-1/2" Dia.	5	-12VDC	TX	RH	-Right Hand	134	-1-3/4"-2-1/4"		
		LC	D	-3-1/2" Dia. stamped, LOCK	8	-24VDC		LH	-Left Hand	138	-1-3/8"-1-5/8"		
		LG	E	-3-1/2" Dia. stepped rose									
		LT	F	-3-1/2" Dia. stepped rose stamped, LOCK									
		LF <sup>6</sup>		<b>Rose Design</b>									
		LV <sup>6</sup>											
			<b>Lever<sup>5</sup></b>										

<sup>1</sup>Consult factory for other cylinder options.

<sup>2</sup>For split finishes, consult factory. Specify hand.

<sup>3</sup>Available on 626 finish only. Consult factory for other finishes.

<sup>4</sup>Door Thickness Range: 1-3/4"-2-1/4" without spacers, 1-3/8"- 1-5/8" with spacers.

<sup>5</sup>See next page for options

<sup>6</sup>Specify handing when ordering LF or LV levers

### Standard models include:

- C8 80EL D LR E 626 5 10252 134 5001 1316
- C8 80EL D LR E 626 8 10252 134 5001 1316
- C8 80EL RX D LR E 626 5 10252 134 5001 1316
- C8 80EL RX D LR E 626 8 10252 134 5001 1316
- C8 80EU D LR E 626 5 10252 134 5001 1316
- C8 80EU D LR E 626 8 10252 134 5001 1316
- C8 80EU RX D LR E 626 5 10252 134 5001 1316
- C8 80EU RX D LR E 626 8 10252 134 5001 1316

**Note:** Consult factory for lead times on other options

# C800 Series Cont'd

## Latch Bolts

Latch Throw		Latch Type	
3/4" Throw Latch	18	5	-All Other Functions
1/2" Throw Latch	10	0	-C810, C840, C844
2-3/8" Backset	1	0	-1" Face, Square Corner
2-3/4" Backset	2	1	-1" Face, 1/4" Radius Corner
3-3/4" Backset	3	2	-1-1/8" Face, Square Corner
5" Backset	5		

**Backset**                      **Face**

## Keying Options

### Standard Keyways

Keying	
OBIT	-0-Bitted
CMK	-Construction Master Keyed
MKD	-Master Keyed
NSK	-Non-Stock Keyed
KA4	-Keyed Alike, Sets of 4
KA2	-Keyed Alike, Sets of 2
KD	-Keyed Different
SC	-Schlage C
SE	-Schlage E
D100	-DORMA SKC
CA	-Corbin 60
CD	-Corbin 59A1
CE	-CorbinRusswin L4
RA	-Russwin 981
RB	-Russwin D1
GA	-Sargent LA
SF	-Schlage F
WA	-Weiser E
YA	-Yale 8
YG	-Yale GA

**Keyway**

Retrofit Keyways Available 0-Bitted Only

### IC Keyways

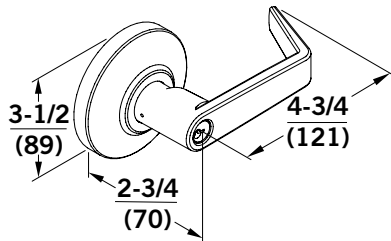
Keying	
TMP	-Temporary Construction Core
MKD	-Combinated (Master Keyed)
BA	-Best A
BB	-Best B
BC	-Best C
BD	-Best D
BE	-Best E
BF	-Best F
BG	-Best G
BH	-Best H
BJ	-Best J
BK	-Best K
BL	-Best L
BM	-Best M
BQ	-Best Q
D100	-DORMA SKC (7-pin Core Only)
BLK	-Black Construction Core
BLU	-Blue Construction Core
GRN	-Green Construction Core

**Keyway**

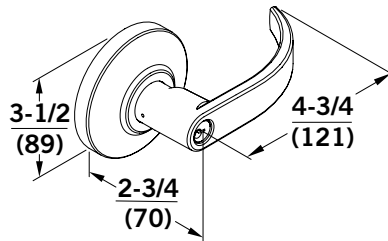
Specify color if required to match existing project

## Lever Designs

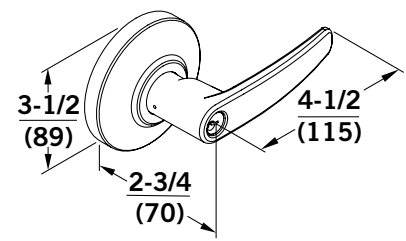
### LR



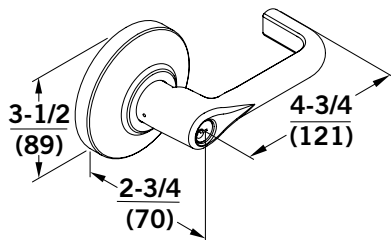
### LC



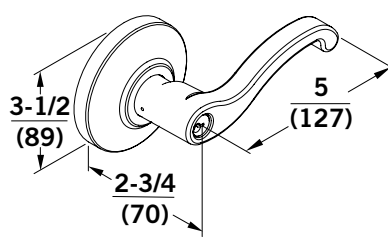
### LG



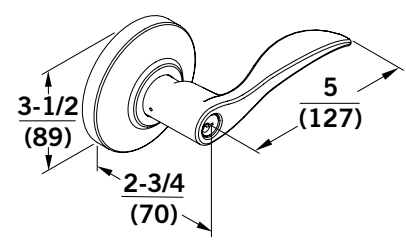
### LT



### LF (Handed)



### LV (Handed)





# SPECIALTY LOCKS



## Specialty Locks



# 3590 Lock 'N' Prox

Battery powered lock with built-in proximity reader – ideal standalone solution.  
2-3/8" W x 2-3/8" H x 7/8" D (60mm x 60mm x 22mm)

*Dimensions of lock only. Excludes pin.*



Energy  
Battery Powered



Strength  
140lbf<sup>1</sup> Holding Force



Warranty  
2 Year Limited Warranty



Mode  
Fail-Secure  
(Fail-Safe When Battery Fails)



Alarm  
Optional Alarm  
Function Available

<sup>1</sup>For base model. 450lbf for 3590A

- Easy to install and simple to program without PC or software
- Can be fitted to sliding doors, drawer backs, leaf doors, glass, etc.
- Up to 1" (25mm) of reliable reading through wood material without external antenna
- 50 users per lock capability
- Flexible, project-based programming and functions available
- Long lasting lithium battery – minimum 30,000 latch openings per life of battery
- Low battery audible warning
- Very robust, impact-proof motor operation
- Audible signal upon card/fob presentation
- Various catch options available including spring open door release
- Black finish

### How To Order

#### Options

3590	A	– Locking Pin with Alarm Function
	CRD	– Proximity Cards – 2 pack
	FOB	– Proximity Fobs – 2 pack

#### Credentials

Example: **3590AFOB**

### Accessories

Model	Description
3590LP-STSP	Locking pin with spring release
3590PX-CRD10	Proximity cards – 10 pack
3590PX-FOB10	Proximity fobs – 10 pack
3590PX-PRO	Replacement programming card
3590GMK	Glass mounting kit
3590ER-SLOC	External reader – surface-mounted with 5ft (1.5m) cable for use when lock is not within read range
3590ER-RLOC	External reader – recess mounted with 5ft (1.5m) cable for use when lock is not within read range Reader diameter is 1/2" (12mm) and length is 1-9/16" (40mm)

### Options

#### A – Locking Pin with Alarm Function

Preprogrammed alarm function to detect if the door is left ajar or forced open. When the door is left ajar for more than 30 seconds the alarm will beep until the door is closed or a valid user card is presented. If the door is forced open, the sounder will sound at full volume immediately. To silence the alarm a valid user card must be presented to the lock.





## 3510LM Electromechanical Cabinet Locks

Compact, surface-mounted design ideal for small enclosures.

1-5/8" W x 1-7/8" H x 13/16" D (42mm x 48mm x 20mm)

*Dimensions of lock only. Excludes pin.*



Energy  
250mA<sup>1</sup>  
Field-Selectable  
12VAC/VDC, 24VAC/VDC



Mode  
Field-Selectable  
Fail-Safe & Fail-Secure



Strength  
250lbf Holding Force



Monitoring  
Built-in Monitoring Switch



Warranty  
3 Year Limited Warranty

<sup>1</sup>Max at 12VAC/VDC, 120mA at 24VAC/VDC

- Surface-mounted compact electric lock
- Versatile mounting positions
- Elongated holes for adjustable mounting
- Zinc-plated (rust-resistant) steel locking pin assembly
- Low energy consumption
- Positioning of the locking pin determines lock mode
- Built-in monitoring switch indicates whether the mechanism is locked or unlocked
- Black finish

### How To Order

3510 LM



## Specialty Locks



## 3513 Electromechanical Cabinet Lock

Compact, surface-mounted design ideal for small enclosures.

1-3/16" W x 2-7/8" H x 1-1/8" D (30mm x 73mm x 29mm)

*Dimensions of lock only. Excludes pin.*

## 3513DM Electromechanical Cabinet Lock with Monitoring

With optional dual monitoring.

1-3/16" W x 3-11/16" H x 1-1/4" D (30mm x 94mm x 32mm)

*Dimensions of lock only. Excludes pin.*



Energy  
200mA<sup>1</sup>  
Field-Selectable 12/24VDC



Strength  
440lbf Holding Force



Mode  
Field-Selectable  
Fail-Safe & Fail-Secure



Monitoring  
Optional Dual Monitoring  
Model Available



Warranty  
3 Year Limited Warranty

<sup>1</sup>Max at 12VDC, 100mA at 24VDC

- Surface-mounted compact electric lock
- Superior heavy-duty metal construction
- Versatile side or top mounting
- Low energy consumption
- Positioning of the solenoid determines lock mode
- Black finish

### Options

#### DM – Dual Monitoring

Built-in locking pin and door monitoring switches.

### How To Order

3513

DM

– Dual Monitoring  
Options



## Specialty Locks

## 3525 Electromechanical Rack Handle Lock

Provides intelligent electronic locking and monitoring capabilities.  
1-1/2"W x 6-3/4"H x 1"D (37mm x 170mm x 24.5mm)

## 3525PRX Electromechanical Rack Handle Lock with Proximity Reader

Includes built-in 125kHz HID® proximity reader.  
1-1/2"W x 8-1/4"H x 1"D (37mm x 210mm x 24.5mm)

	Energy 200mA <sup>1</sup> Field-Selectable 12-24VDC		Monitoring Lock & Handle Status
	Prox Optional 125kHz HID® Proximity Reader Model Available		Warranty 1 Year Limited Warranty

<sup>1</sup>Typical: less than 200mA at 12VDC, max/stall: 1A, standby: 50mA max, output signal: 100mA max load, card reader module: 60mA max

- Easy to install and use
- Local monitoring with multi-color LED indicator
- Remote lock and unlock control
- Single or multi-point locking
- Low current, gear motor driven mechanism
- Momentary or continuous lock actuation
- High security DIN lock for mechanical key override
- Non-handed
- Wire harness and hardware kit included
- Includes three keys (keyed alike)
- Activated via any third party control system (Access Control)
- Housing, handle and mounting bracket are made of black, glass-filled nylon
- Shaft and rotation limiter are made of die-cast zinc with a bright sealer finishing

### Options

#### PRX – Proximity Reader

Integrated 125kHz HID® proximity reader which recognizes existing employee RFID prox cards. Wiegand output can be connected to a standalone controller or an existing networked access control system for remote control, monitoring and reporting.

### How To Order

3525  
PRX – Proximity Reader  
Options

### Accessories

Model	Description
<b>Cams</b>	
3525-GR3815	0.61" (15.5mm) grip cam, 1-1/2" (38mm) length
3525-GR3817	0.69" (17.5mm) grip cam, 1-1/2" (38mm) length
3525-GR3819	0.77" (19.5mm) grip cam, 1-1/2" (38mm) length
3525-GR3821	0.85" (21.5mm) grip cam, 1-1/2" (38mm) length
3525-GR3823	0.93" (23.5mm) grip cam, 1-1/2" (38mm) length
3525-GR4522	0.77" (19.5mm) grip cam, 1-3/4" (45mm) length
3525-GR4524	0.85" (21.5mm) grip cam, 1-3/4" (45mm) length
3525-GR4526	0.93" (23.5mm) grip cam, 1-3/4" (45mm) length
<b>Gearbox For Multi-Point Systems</b>	
3525-MPLH	Left Hand Gearbox (CCW to open)
3525-MPRH	Right Hand Gearbox (CW to open)
<b>Credentials</b>	
1326R-H-10	125kHz Clamshell Proximity Card, HID® proximity protocol, 10 pack
1326R-H-25	125kHz Clamshell Proximity Card, HID® proximity protocol, 25 pack
1326R-H-50	125kHz Clamshell Proximity Card, HID® proximity protocol, 50 pack

HID® is a registered trademark of HID Global Corporation, an ASSA ABLOY company. All other trademarks are the property of their respective owners. RCI reserves the right to change specifications without notice.  
Note: The lock sensor is an optical device that senses the presence of the locking cam. Keyed cylinder can affect sensing. Removal of factory installed keyed cylinder will void warranty.





## Specialty Locks



### AL3 Electromechanical Active Latch

Compact, low power electronically controlled clutch mechanism.  
1-1/4"W x 7/8"H x 1/2"D (31mm x 21mm x 12mm)



Energy  
180mA<sup>1</sup>  
3.3-6.5VDC



Durability  
1,000,000 Operations



Mode  
Field-Selectable  
Fail-Secure & Fail-Safe



Warranty  
1 Year Limited Warranty

<sup>1</sup>Peak at 6.5VDC

- An extremely compact integrated mechanism, ready to be implemented into a range of applications
- Instead of a solenoid or motor, the active latch mechanism delivers responsive electronic control with ultra-low power consumption
- Easy to integrate into a range of modern lock systems
- Durable and reliable with only a few moving parts, the mechanism operates for more than 1 million cycles
- Exceeds the requirements of the ANSI and BSI
- The compact design fits into door leaves and standard hole size, ideally suited for lockers and cabinets
- Ideally suited where space constraints and power is crucial in the design
- Extended battery life significantly reduces maintenance costs and improves reliability
- Virtually silent activation permits very discrete operation of the lock

#### Options

##### T – Toggle Mode

Will toggle between a locked and an unlocked state for every signal sent to the trigger wire. With 3.6VDC applied all of the time, a contact closure between the trigger wire and ground will cause the AL3 to change states. I.e. go from locked to unlocked or vice versa.

#### How To Order

##### Options

	T	– Toggle Mode
AL3		

Note: Custom functions are available upon request. Please call your sales representative for more information.



### 3520 Electronic Latch

Suited for a variety of applications with multiple mounting configurations.

3-5/8"W x 1-11/32"H x 1"D (92mm x 34mm x 25mm)



Energy  
200mA  
12VDC<sup>1</sup>



Strength  
440lbf Holding Force



Monitoring  
Permits Remote  
Monitoring



Warranty  
1 Year Limited Warranty

<sup>1</sup>No load operating current at 12 and 24VDC, 1A at peak/stall

- Simple transition from mechanical to electronic access
- "Push-to-close" convenience for any application – retrofit or new installation
- Accepts signals from any electronic actuation source
- Frame-side mounting simplifies wiring
- Single or multi-point latching
- Permits remote monitoring, audit trails and alarming
- Works with a variety of door mounted mechanical latches
- 12VDC standard, 24VDC model available
- Available in side and front mount and left, right and center latch bolt orientation
- Enclosure and latch bolt made of thermoplastic

#### How To Order

<b>Mount</b>		<b>Voltage</b>	
Side –	S		
Front –	F	24	–24VDC <sup>2</sup>
3520			
Left –	L		
Right –	R		
Center –	C		

##### Latch Bolt Orientation

<sup>2</sup>12VDC Standard

#### Accessories

Model	Description
3520WH-40	Wire harness with mate connector, 11.81" (300mm)
3520WH-41	Wire harness with mate connector, 39.37" (1000mm)
3520WH-42	Wire harness with mate connector, 78.74" (2000mm)
3520RK	Rotation kit for field configuration of latch bolt direction/orientation



# 3360 Cushion-Lok® Glass Door Locks

For tempered glass metric doors without frames.  
1-25/32" W x 5-11/16" H x 1-9/16" D (45mm x 145mm x 40mm)

 Energy 200mA<sup>1</sup> 12VDC/24VDC

 Mode Fail-Safe

 Monitoring Optional Latch Monitor Model Available

 Warranty 3 Year Limited Warranty

<sup>1</sup>Max at 12VDC, 100mA at 24VDC

- Built-in shock absorbing technology ensures gentle closing and locking
- No prep required for glass doors
- Designed for 10mm glass door – 12mm glass door option available
- Unique gentle closure
- Use on single glass doors with glass side or transom panels
- For metric measured doors only (altering the lock to accommodate imperial measured doors will void all warranties)
- Non-handed
- Attractive extruded aluminum housing
- Brushed Anodized Aluminum (28) finish

### Options

**2 – 12mm**  
For 12mm thick glass doors

**LM – Latch Monitor**  
Built-in latch monitoring switch

### How To Order

3360	-	Voltage		Options
		06	- 12VDC	
		09	- 24VDC	
		2	- 12mm	Options

Example: 3360-062



# MEM4400 Compact Electromechanical Lock

Ideal for sliding doors or small enclosures.  
1-3/4"W x 1-3/16"H x 21/32"D (44mm x 30mm x 16.5mm)  
Armature Plate: 1-3/4"W x 1-3/16"H x 1/2"D (44mm x 30mm x 12.5mm)

 Energy 260mA 12VDC

 Strength 880lbf Holding Force

 Mode Fail-Safe

 Monitor Lock & Door Status Sensors

 Warranty 3 Year Limited Warranty

- Ultra-compact design
- Low power consumption
- Easy installation
- Early warning alarm
- No residual magnetism
- For automatic sliding doors (lock located on or within door track)

### How To Order

MEM4400

# S2500A Mini Electromagnetic Lock

For small enclosures or hutches.  
4-1/4"W x 1-1/2"H x 3/4"D (107mm x 37mm x 20mm)  
Armature Plate: 2-1/2"W x 1-1/4"H x 11/32"D (44mm x 30mm x 9mm)

 Energy 240mA 12VDC

 Strength 165lbf Holding Force

 Mode Fail-Safe

 Warranty 3 Year Limited Warranty

- Mini magnetic lock single door
- Surface-mounted magnet
- Non-monitored
- Power off to release door
- Satin anodized aluminum housing
- Zinc plated electromagnetic body
- Grain orientated silicone steel armature plate

### How To Order

S2500A



## Specialty Locks



## EM-MAG1500 Compact Electromechanical Lock

For outswing doors & small enclosures.

6-7/32"W x 1-7/16"H x 1-3/8"D (158mm x 36mm x 35mm)

Armature Plate: 4-3/4"W x 1-3/16"H x 1/2"D (121mm x 30mm x 12.5mm)



Energy  
240mA<sup>1</sup>  
Field-Selectable  
12/24VDC



Strength  
1500lbf  
Holding Force



Mode  
Fail-Safe



Monitor  
Lock & Door  
Status Sensors



Warranty  
3 Year Limited  
Warranty

<sup>1</sup>At 12VDC, 120mA at 24VDC

- Slim design; significantly smaller than standard electromagnetic locks
- Bi-color light panel indicates lock status
- Releases under side load of up to 130lbs (60kg)
- Early warning alarm
- Includes anti-tamper security plate
- Anodized aluminum housing; zinc plated for anti-corrosion
- No residual magnetism
- Low energy consumption
- Factory tested to over 1-million cycles

### How To Order

EM-MAG1500



## MEM2400 Compact Electromechanical Lock

For inswing doors & small enclosures.

8-5/8"W x 1-7/16"H x 1-3/8"D (218mm x 36mm x 35mm)

Armature Plate: 7-1/8"W x 1-3/16"H x 1/2"D (181mm x 30mm x 12.5mm)



Energy  
350mA<sup>1</sup>  
Field-Selectable  
12/24VDC



Strength  
1500lbf  
Holding Force



Mode  
Fail-Safe



Monitor  
Lock & Door  
Status Sensors



Warranty  
3 Year Limited  
Warranty

<sup>1</sup>At 12VDC, 175mA at 24VDC

- Patented electromagnetic lock with early warning detectors
- Bi-color LED light indicates lock status
- Compact surface-mount design
- Includes adjustable L & Z bracket
- Capable of releasing under door back pressure (pre-load) of up to 150lbs (70kg)
- Aluminum extrusion casing and anodized coated, high grade zinc plating on magnet and plate
- No residual magnetism
- Low energy consumption

### How To Order

MEM2400





# EXIT DEVICES



## 6451 Exit Sensor Bar

Non-latching bar activated with a light touch.  
2-3/8"H x 2-7/16"D (60mm x 62mm)



Warranty  
Lifetime Limited Warranty

- Offers immediate “no prior knowledge” egress by pushing on the bar at any point
- Optical sensing electronics controlling lock and signal functions have no moving parts to wear out
- Built-in redundant mechanical switch for back-up release
- No tune-in required – complicated calibration and fine tuning are unnecessary and return calls are eliminated
- Three standard bar lengths are offered – contact factory for custom lengths
- Bar may be activated by anything – human touch, briefcase, cane, wheelchair, etc.
- Ideal for ADA compliant installations
- Weather-resistant electronics – conformal coated circuitry resists moisture damage
- All-metal construction – the entire bar, including end caps, is made of aircraft-grade aluminum, offering high resistance to abuse and vandalism
- Armored power transfer cord – furnished standard
- Dual output standard – DPDT contacts provide lock control and alarm shunting capabilities

- Built-in spike suppression – all input/output terminals are protected from line spikes
- Entire bar is finished, including the end caps
- Contemporary design – architecturally engineered to offer one of the lowest profiles in the industry
- Non-handed
- ANSI/UL294
- California State Fire Marshal Listed (CSFM: 3774-1457:0102)
- NYC MEA: 23-92-E Vol. II
- Factory tested to over 1-million cycles



NYC MEA  
#23-92-E  
VOL. II

### Options

- DMB – Dummy Bar; bar-less electronics
- PTE – “Push To Exit” Engraved Signage; 1" high, 1/8" stroke, red filled



Engraved Signage

### How To Order

		Finish	
		Brushed Anodized Aluminum <sup>1</sup>	28
		Brushed Brass	4
		Brushed Dark Bronze	10B
6451	-		x
36" (914mm) Door, 34" (864mm) Bar	-	36	DMB – Dummy Bar
42" (1067mm) Door, 40" (1016mm) Bar	-	42	PTE – “Push To Exit” Engraved Signage
48" (1219mm) Door, 46" (1168mm) Bar	-	48	
Custom Length Cut	-	CLC	
		<b>Options</b>	
		<b>Width</b>	

Example: 6451 - 36 X 28

<sup>1</sup>Standard

### Accessories

Model	Description
CAB64	Cable Kit; 16 feet, 8-conductor 22 AWG jacketed hook-up cable to facilitate field wiring
TSB	Mounting Pads; modified to match Securitron® TSB mounting footprint
WDK	Wood Door Kit; four thru-bolts and four sex nuts



## 120 Series Exit Bar

Non-latching exit bar.  
2-1/2"H x 3-5/8"D (63.5mm x 92mm)



Warranty  
3 Year Limited Warranty

- Ideal for easy egress to release electromagnetic lock
- 3A @ 30VDC (Inductive), 4A @ 30VDC (Resistive)
- Available in SPDT and 2SPDT
- Two standard bar lengths are offered – can be field cut for custom lengths

### How To Order

Model	Description	For Door Widths	Finish
120A-SS1	Non-latching exit bar with SPDT switch	24–36" (610–914mm)	28/40
L120A-SS1	Non-latching exit bar with SPDT switch	37–48" (940–1219mm)	28/40
120A-SS2	Non-latching exit bar with 2SPDT switch	24–36" (610–914mm)	28/40
L120A-SS2	Non-latching exit bar with 2SPDT switch	37–48" (940–1219mm)	28/40
120D-SS1	Non-latching exit bar with SPDT switch and camlock dogging	24–36" (610–914mm)	28/40
L120D-SS1	Non-latching exit bar with SPDT switch and camlock dogging	37–48" (940–1219mm)	28/40
120D-SS2	Non-latching exit bar with 2SPDT switch and camlock dogging	24–36" (610–914mm)	28/40
L120D-SS2	Non-latching exit bar with 2SPDT switch and camlock dogging	37–48" (940–1219mm)	28/40



## 1200 Series Mechanical Rim Exit Bar

Interlocking latch design.  
2-1/2"H x 3-5/8"D (63.5mm x 92mm)



Warranty  
3 Year Limited Warranty



- Weather resistant for outdoor use
- All devices re-latch
- Camlock and cylinder dogging available (for non-fire labeled doors)
- Choice of 3 alarm modules
- Two standard bar lengths are offered – can be field cut for custom lengths
- Non-handed
- High security, exceeding a 1" dead bolt
- Made in the USA
- UL certified ANSI/BHMA A156.3-2008, Grade 1
- UL Listed Fire Exit Hardware, 3 hour fire-rating
- UL Listed Panic Hardware

- Conforms to Positive Pressure Standards UL 10C & UBC 7-2
- Accepted by NYC MEA 337-92M



### Options

- SS1A-10/20/30\* – Signal Switch for models with alarm modules (SPDT)
- SS2A-10/20/30\* – Signal Switch for models with alarm modules (2SPDT)
- LMS – Lock Monitor Switch. Rated 5A, 250V DC

### How To Order

Model	Description	For Door Widths	Finish
1200A	Mechanical rim exit bar, no dogging	24–36" (610–914mm)	28/40
L1200A	Mechanical rim exit bar, no dogging	37–48" (940–1219mm)	28/40
1200C*	Mechanical rim exit bar cylindrical dogging exit device	24–36" (610–914mm)	28/40
L1200C*	Mechanical rim exit bar cylindrical dogging exit device	37–48" (940–1219mm)	28/40
1200D	Mechanical rim exit bar cam dogging exit device	24–36" (610–914mm)	28/40
L1200D	Mechanical rim exit bar cam dogging exit device	37–48" (940–1219mm)	28/40
1200F	Mechanical rim exit bar fire exit device	24–36" (610–914mm)	28/40
L1200F	Mechanical rim exit bar fire exit device	37–48" (940–1219mm)	28/40
1210A	Mechanical rim exit bar no dogging, alarm module (9V battery)	32–36" (813–914mm)	28/40
L1210A	Mechanical rim exit bar no dogging, alarm module (9V battery)	37–48" (940–1219mm)	28/40
1210D	Mechanical rim exit bar, camlock dogging, alarm module (9V battery)	32–36" (813–914mm)	28/40
L1210D	Mechanical rim exit bar, camlock dogging, alarm module (9V battery)	37–48" (940–1219mm)	28/40
1210F	Mechanical rim exit bar, fire doors, alarm module (9V battery)	32–36" (813–914mm)	28/40
L1210F	Mechanical rim exit bar, fire doors, alarm module (9V battery)	37–48" (940–1219mm)	28/40
1220A	Mechanical rim exit bar, alarm module (12-24VDC remote, 9V battery backup)	32–36" (813–914mm)	28/40
L1220A	Mechanical rim exit bar, alarm module (12-24VDC remote, 9V battery backup)	37–48" (940–1219mm)	28/40
1220D	Mechanical rim exit bar, camlock dogging, alarm module (12-24VDC remote, 9V battery backup)	32–36" (813–914mm)	28/40
L1220D	Mechanical rim exit bar, camlock dogging, alarm module (12-24VDC remote, 9V battery backup)	37–48" (940–1219mm)	28/40
1220F	Mechanical rim exit bar for fire doors, alarm module (12-24VDC remote, 9V battery backup)	32–36" (813–914mm)	28/40
L1220F	Mechanical rim exit bar for fire doors, alarm module (12-24VDC remote, 9V battery backup)	37–48" (940–1219mm)	28/40
1230A	Mechanical rim exit bar, with alarm module (12-24VDC remote)	32–36" (813–914mm)	28/40
L1230A	Mechanical rim exit bar, with alarm module (12-24VDC remote)	37–48" (940–1219mm)	28/40
1230D	Mechanical rim exit bar, camlock dogging, alarm module (12-24VDC remote)	32–36" (813–914mm)	28/40
L1230D	Mechanical rim exit bar, camlock dogging, alarm module (12-24VDC remote)	37–48" (940–1219mm)	28/40
1230F	Mechanical rim exit bar for fire doors, alarm module (12-24VDC remote)	32–36" (813–914mm)	28/40
L1230F	Mechanical rim exit bar for fire doors, alarm module (12-24VDC remote)	37–48" (940–1219mm)	28/40

\*Alarm modules cannot be added to devices with cylindrical dogging.

### Accessories

Model	Description
DDS	Double door strike, black oxide finish
SS1	Signal switch SPDT
SS2	Signal switch 2SPDT
SS1W	Signal switch SPDT weather-proof with mounting hardware

### Notes

Models with A, C or D Suffix: cULus Listed Panic Hardware, ANSI/BHMA A156.3-2001, Grade 1  
Models with F Suffix: cULus Fire Exit Hardware rated 3-hours, ANSI/BHMA A156.3, Grade 1  
Conforms to ANSI/UL10C and UBC 7-2 (1997)  
Alarm cylinder not included.

# 1300 Series Electrified Rim Exit Bar

Interlocking latch design.  
2-1/2"H x 3-5/8"D (63.5mm x 92mm)



Warranty  
3 Year Limited Warranty



- Continuous-duty solenoid which provides a remote unlock feature for controlled entry
- Field-selectable 12/24 VDC (800mA @ 12VDC, 400mA @ 24VDC)
- Weather resistant for outdoor use
- All devices re-latch
- Camlock and cylinder dogging available (for non-fire labeled doors)
- Choice of 3 alarm modules
- Two standard bar lengths are offered – can be field cut for custom lengths
- Non-handed
- High security, exceeding a 1" dead bolt
- Made in the USA
- UL certified ANSI/BHMA A156.3-2008, Grade 1

- UL Listed Fire Exit Hardware, 3 hour fire-rating
- UL Listed Panic Hardware
- Conforms to Positive Pressure Standards UL 10C & UBC 7-2
- Accepted by NYC MEA 337-92M



#### Options

- SS1A-10/20/30\* – Signal Switch for models with alarm modules (SPDT)
- SS2A-10/20/30\* – Signal Switch for models with alarm modules (2SPDT)
- LMS – Lock Monitor Switch. Rated 5A, 250V DC

#### How To Order

Model	Description	For Door Widths	Finish
1300A	Electrified rim exit bar, no dogging	24–36" (610–914mm)	28/40
L1300A	Electrified rim exit bar, no dogging	37–48" (940–1219mm)	28/40
1300C*	Electrified rim exit bar, cylindrical dogging	24–36" (610–914mm)	28/40
L1300C*	Electrified rim exit bar, cylindrical dogging	37–48" (940–1219mm)	28/40
1300D	Electrified rim exit bar, camlock dogging	24–36" (610–914mm)	28/40
L1300D	Electrified rim exit bar, camlock dogging	37–48" (940–1219mm)	28/40
1300F	Electrified rim exit bar for fire doors	24–36" (610–914mm)	28/40
L1300F	Electrified rim exit bar for fire doors	37–48" (940–1219mm)	28/40
1310A	Electrified rim exit bar, no dogging, alarm module (9V battery)	32–36" (813–914mm)	28/40
L1310A	Electrified rim exit bar, no dogging, alarm module (9V battery)	37–48" (940–1219mm)	28/40
1310D	Electrified rim exit bar, camlock dogging, alarm module (9V battery)	32–36" (813–914mm)	28/40
L1310D	Electrified rim exit bar, camlock dogging, alarm module (9V battery)	37–48" (940–1219mm)	28/40
1310F	Electrified rim exit bar for fire doors, alarm module (9V battery)	32–36" (813–914mm)	28/40
L1310F	Electrified rim exit bar for fire doors, alarm module (9V battery)	37–48" (940–1219mm)	28/40
1320A	Electrified rim exit bar, alarm module (12-24VDC remote, 9V battery backup)	32–36" (813–914mm)	28/40
L1320A	Electrified rim exit bar, alarm module (12-24VDC remote, 9V battery backup)	37–48" (940–1219mm)	28/40
1320D	Electrified rim exit bar, camlock dogging, alarm module (12-24VDC remote, 9V battery backup)	32–36" (813–914mm)	28/40
L1320D	Electrified rim exit bar, camlock dogging, alarm module (12-24VDC remote, 9V battery backup)	37–48" (940–1219mm)	28/40
1320F	Electrified rim exit bar, fire doors, alarm module (12-24VDC remote, 9V battery backup)	32–36" (813–914mm)	28/40
L1320F	Electrified rim exit bar, fire doors, alarm module (12-24VDC remote, 9V battery backup)	37–48" (940–1219mm)	28/40
1330A	Electrified rim exit bar, with alarm module (12-24VDC remote)	32–36" (813–914mm)	28/40
L1330A	Electrified rim exit bar, with alarm module (12-24VDC remote)	37–48" (940–1219mm)	28/40
1330D	Electrified rim exit bar, camlock dogging (12-24VDC remote)	32–36" (813–914mm)	28/40
L1330D	Electrified rim exit bar, camlock dogging (12-24VDC remote)	37–48" (940–1219mm)	28/40
1330F	Electrified rim exit bar for fire doors, alarm module (12-24VDC remote)	32–36" (813–914mm)	28/40
L1330F	Electrified rim exit bar for fire doors, alarm module (12-24VDC remote)	37–48" (940–1219mm)	28/40

#### Accessories

Model	Description
DDS	Double door strike, black oxide finish
SS1	Signal switch SPDT
SS2	Signal switch 2SPDT
SS1W	Signal switch SPDT weather-proof with mounting hardware

#### Notes

Models with A, C or D Suffix: cULus Listed Panic Hardware, ANSI/BHMA A156.3-2001, Grade 1  
Models with F Suffix: cULus Fire Exit Hardware rated 3-hours, ANSI/BHMA A156.3, Grade 1  
Conforms to ANSI/UL10C and UBC 7-2 (1997)  
Alarm cylinder not included.



## Exit Devices



## Exterior Trims

For 1200/1300 rim exit devices.

- Electrified option available
- UL certified ANSI/BHMA 156.3, Grade 1
- UL certified for fire doors

Model	Description	Finish
01-LTD	Exit only	28/40
02P-LTD	Escutcheon with pull – thru-bolt mounted 1-15/16"W	28/40
03C-LTD	Escutcheon only – cutout for cylinder 1-7/8"W, thru-bolt mounted	28/40
03P-LTD	Escutcheon with pull – cutout for cylinder 1-15/16"W, thru-bolt mounted	28/40
08-L	Lever – field selectable handing LH/RH, cutout for cylinder, thru-bolt mounted 1-13/16"W, Std. LHR, field reversible to RHR	28/40
08N-L	Lever narrow – cutout for cylinder, for 2-1/8" stile, thru-bolt mounted 1-13/16"W, specify handing	28/40
08-EL	Electrified lever – field selectable handing LH/RH, cutout for cylinder, thru-bolt mounted 1-13/16"W, Std. LHR, field reversible to RHR, 24VDC standard (12VDC optional)	28/40
08N-EL	Electrified lever narrow – cutout for cylinder, for 2-1/8" stile, thru-bolt mounted 1-13/16"W, specify handing, 24VDC standard (12VDC optional)	28/40

*NOTE: Cylinders not supplied with trim.*

ELECTROMAGNETIC LOCKS

ELECTRIC STRIKES

KEYPADS & READERS

SWITCHES

LOCKSETS

SPECIALTY LOCKS

EXIT DEVICES

# POWER SUPPLIES



## Power Supplies



### 10-1 1.5A Power Supply

### 10-1-FPD 1.5A Power Supply with Fire Panel Disconnect

12-1/2"W x 12-1/2"H x 4"D (318mm x 318mm x 102mm)



Energy  
Field-Selectable  
1.5A At 12VDC  
1A At 24VDC



Warranty  
Lifetime Limited Warranty

- Multiple listing for a wide variety of applications
- Field-selectable voltage 1.5A at 12VDC or 1A at 24VDC
- Filtered and regulated DC output
- Short circuit protection
- AC fail output relay
- Modular options
- External AC power indicator
- Easy installation

#### FPD – Fire Panel Disconnect Features

- Jumper-selectable auto or manual reset
- Fire Panel Interface with Switching Output (FPD model only)
- “End of line” resistor supervision on fire interface
- Selectable ground fault detection on fire interface
- Instant unlock upon power failure
- Remote override reset capabilities for authorized personnel
- Multi-panel interconnect-fire disconnect
- ANSI/UL 294 Listed
- CAN/ULC-S319 Listed

#### How To Order

10	-	1	-	
Fire Panel Disconnect –				FPD
Options				





## 10-3 3A Power Supply

## 10-3-FPD 3A Power Supply with Fire Panel Disconnect

12-1/2"W x 12-1/2"H x 4"D (318mm x 318mm x 102mm)



Energy  
Field-Selectable  
3A At 12VDC  
1.5A At 24VDC



Warranty  
Lifetime Limited Warranty

- Multiple listing for a wide variety of applications
- Field-Selectable voltage 3A at 12VDC or 1.5A at 24VDC
- Filtered and regulated DC output
- Short circuit protection
- AC fail output relay
- Modular options
- External AC power indicator
- Easy installation

### FPD – Fire Panel Disconnect

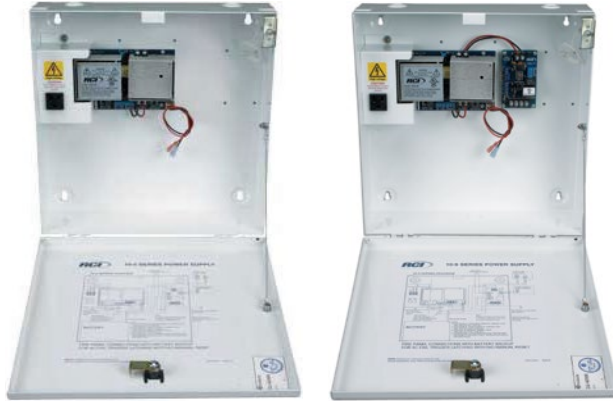
- Jumper-selectable auto or manual reset
- Fire Panel Interface with Switching Output (FPD model only)
- “End of line” resistor supervision on fire interface
- Selectable ground fault detection on fire interface
- Instant unlock upon power failure
- Remote override reset capabilities for authorized personnel
- Multi-panel interconnect-fire disconnect
- ANSI/UL 294 Listed
- CAN/ULC-S319 Listed

### How To Order

10	-	3	-	
Fire Panel Disconnect –				FPD
<b>Options</b>				



## Power Supplies



### 10-5 5A Power Supply

### 10-5-PDD-FT 5A Power Supply with Fire Panel Disconnect

12-1/2"W x 12-1/2"H x 4"D (318mm x 318mm x 102mm)



Energy  
Auto-Sensing  
5A At 12VDC  
3A At 24VDC



Warranty  
Lifetime Limited Warranty

- Multiple listing for a wide variety of applications
- Field-selectable voltage 5A at 12VDC or 3A at 24VDC
- Filtered and regulated DC output
- Short circuit protection
- Low battery monitor and AC fail output relay
- Modular options
- Built-in 120VAC electrical outlet
- Auto-sensing AC input (90-250VAC)
- Drop-down lid can be used as a work-surface
- External AC power indicator
- Universal knock-outs
- Built-in battery charging circuits

#### PDD-FT – Fire Panel Disconnect

- Jumper-selectable auto or manual reset
- Fire panel interface with switching output
- “End of line” resistor supervision on fire interface
- Selectable ground fault detection on fire interface
- Instant unlock upon power failure
- Remote override reset capabilities for authorized personnel
- Multi-panel interconnect-fire disconnect
- ULC-S318 Listed
- ANSI/UL 603 Listed
- ANSI/UL 294 Listed
- CAN/ULC-S319 Listed
- CAN/ULC-S533 Listed

#### How To Order

10	-	5	-	
Fire Panel Disconnect –				PDD-FT

Options



# Accessories

## TD365 Day Timer

3-3/4"W x 4-11/16"H x 1"D  
(95mm x 120mm x 25mm)



Warranty  
2 Year Limited Warranty



- 2 momentary or latching SPDT relays to control locks and other electronically controlled devices or circuits
- 40 holidays and 99 user events
- Automatic voltage selection 12 to 24 VAC or DC
- Large alpha-numeric backlit LCD display for easy programming 16 characters by 2 line LCD
- Lithium battery included
- Ideal for openings requiring scheduled access

## PDD-FT Power Distribution Board With Fire Trigger

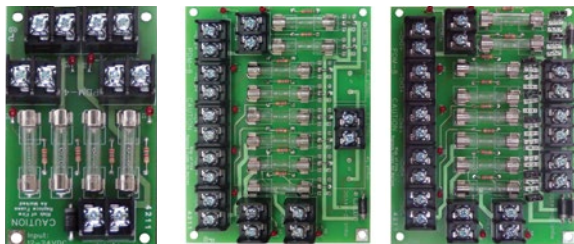
2-1/4"W x 3-3/4"H (56.5mm x 95.25mm)



Warranty  
2 Year Limited Warranty



The PDD-FT board is a fire panel control interface. This board can be used to control DC output based on a fire alarm control panel. Outputs switch state on alarm.



## PDM-4 Distribution Board

2-1/4"W x 3-3/4"H (56.5mm x 95.25mm)

## PDM-8 Distribution Board

3-3/4"W x 4-3/4"H (95.5mm x 122mm)

## PDM-8S Distribution Board

3-3/4"W x 4-3/4"H (95.5mm x 122mm)



Warranty  
2 Year Limited Warranty

When installed into a power supply, servicing time can be greatly reduced by the output indicator LED's. If an output fuse is blown the accompanying LED will be off, simply identifying the device connected to this output. This will allow potential problems to be resolved quickly. In addition to short circuit protection, the input terminals also have a surge protector that can absorb a 1500W spike or surge to protect connected devices.

- PDM-4 distributes a DC source into 4 outputs
- PDM-8 distributes a DC source into 8 outputs
- PDM-8S distributes up to 3 DC sources into 8 outputs
- The output voltage and total current available is determined by the input supply
- Separate red power indicator LED for each output



## Power Supplies

### Accessories Cont'd



#### Plug-In Transformers

2-1/4"W x 3-3/16"H x 2"D (57mm x 81mm x 51mm)



Warranty  
2 Year Limited Warranty

- Plug into a standard 115VAC outlet to provide low voltage AC output
- Thermally protected to prevent overload due to short

Model	Description	Output Voltage / Power
T1002	Plug-In Transformer CSA to UL 1310	12VAC-20VA
T1004	Plug-In Transformer CSA to UL 1310	16VAC-20VA
T1008	Plug-In Transformer CSA to UL 1310	24VAC-20VA



#### Plug-In Power Supply

1-5/8"W x 3"H x 1-3/8"D (41mm x 76mm x 35mm)

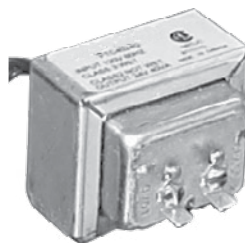


Warranty  
2 Year Limited Warranty

Plugs into a standard 115VAC outlet and provides a 12VDC output

- 6' Wire leads (1.8m)

Model	Description	Output Voltage / Power
T1003	Plug-In/UL Power Supply	12VDC-1.5A



#### Wire-In Transformers

T1001: 2-1/4"W x 2"H x 2"D (57mm x 51mm x 51mm)

T1005 and T1009: 2-1/4"W x 2"H x 2-1/4"D (57mm x 51mm x 57mm)



Warranty  
2 Year Limited Warranty

- For permanent installations requiring hard wiring

Model	Description	Output Voltage / Power
T1001	Wire-In/UL Transformer	12VAC-20VA
T1005	Wire-In Transformer CSA to UL 1585	16.5VAC-37VA
T1009	Wire-In Transformer CSA to UL 1585	24VAC-40VA



#### Bridge Rectifiers

10R1, 10R1-6: 3/16"D x 3/8" Dia. (4.75mm x 9.5mm)

10R3, 10R3-6: 1/4"D x 5/8" Sq. (6.4mm x 16mm)



Warranty  
2 Year Limited Warranty

- Converts non-filtered AC to DC for silent operation
- Shrink-connect leads on -6" leads

Model	Description	Output Voltage / Power
10R1	Rectifier	1A
10R1-6	Rectifier with 6" leads	1A
10R3	Rectifier	3A
10R3-6	Rectifier with 6" lead	3A

# Terms & Conditions

## Freight

Transportation and handling charges on all goods are prepaid by RCI, and billed back to the customer, unless otherwise specified. Free freight will apply on all orders of US\$4000.00 net or more per purchase order within the continental United States, unless otherwise specified. Carrier to be selected by RCI; air freight and other requested shipments will be at the expense of the customer. Handling is added to freight.

## Product Changes

RCI reserves the right to discontinue models and/or make changes at anytime in materials, parts, components, specification, etc., without notice and without incurring any obligations on models built prior to the change.

## Shortages

A written claim for shortages must be made within 10 days after receipt of the order.

## Templates

Templates are available for all standard products, special templates and wiring diagrams for custom orders are available upon request for a minimal fee.

## Defective Products

Products that exhibit defects in any material and/or workmanship will be replaced by the factory upon verification by a local representative or the technical department at RCI. All returns must be issued a returned material authorization (RMA) number prior to being sent back to our facility. Returns can be done immediately or periodically, depending on the urgency. They will be addressed promptly. Warranty information is available upon request for individual products.

## Cancelled Orders

Cancelled orders are subject to an additional charge. Cancellation will not be accepted of goods that are not regular stock items, such as special orders. Damage Claims – Title passes to the customer upon delivery to the carrier. Loss and damage claims must be filed with the carrier by the customer. Disputes with the carrier do not alter our payment terms and are the responsibility of the customer.

## Credit Balance

Any resulting credit balance on a customer's account for returns or any reason other than RCI's error, must be used as a credit against future purchases. Checks will not be issued to pay off a credit balance, other than due to RCI's error.

## Prices

Orders are accepted with the understanding that they will be billed at prices in effect at the time of shipment, except when firm prices have been quoted. Prices are subject to change without notice.

## FOB

Prices are FOB our warehouse. Upon pick-up by the transportation company, shipments become the property of the purchaser, who assumes the risk of loss or damage in transit.

## Payment Terms

Payment terms are NET 30 DAYS to customers with approved credit. Cash discount terms of 2% - 10 days are available unless otherwise stated. We reserve the right to withhold shipment to accounts that do not meet our payment terms. State sales tax is extra where applicable.

## Returned Goods

Any defects or errors for which RCI is responsible for will be promptly rectified. Returned goods will not be accepted without prior approval and a returned material authorization (RMA) number, which must appear on all documentation relating to the returned merchandise. The original invoice number and purchase order number is required for all returns. All returns must be shipped with freight prepaid. Returned goods are subject to a minimum restocking charge of 20%. There may be additional charges to replace any abused or misused parts or components to restore the product to its original or saleable condition. Time limit for returning merchandise is 30 days after authorization, unless otherwise stated.

## Special Order Returns

Returns of "Special Orders" will not be authorized.

## C.O.D.

While processing a credit application, RCI may require your initial order C.O.D. We reserve the right to make C.O.D. shipments at our discretion.

## Discounts

All discounts are subject to foreign exchange fluctuations, changes in import duties, and other applicable taxes.

## E&OE

Errors and Omissions Excepted.

## Minimum Charge

No minimum charges apply.

# Glossary

**alternating current (AC)** – An electric current that reverses its direction regularly and continually. The voltage alternates its polarity and direction of current flow from negative to positive.

**American National Standards Institute (ANSI)** – A federation of trade, technical and professional organizations, government agencies and consumer groups that coordinates standards development, publishes standards, and operates a voluntary certification program.

**American Wire Gauge (AWG)** – The standard system in the United States for designating wire size (diameter of metal).

**ampere (amp)** – Unit of measurement for the rate of electrical current flow characterized by the symbols “I” (in ohm’s law formulas) or “A”. One ampere is the current flowing through one ohm of resistance at one volt potential.

**annunciation** – Audible and visual signaling device.

**cam** – A rotating eccentric piece attached to the end of a cylinder plug to actuate a lock or latch mechanism.

**circuit** – Path through which electrical energy flows.

**circuit closed** – (1) An electrical circuit in which current normally flows until interrupted by the opening of a switch or a switch-type electronic component. (2) A circuit or switch in which the contacts are closed during normal operation.

**circuit open** – (1) An electrical circuit in which current does not flow until permitted by the closing of a switch or a switch-type electronic component. (2) A circuit or switch in which contacts are open during normal operation.

**closure** – The point at which two contacts meet to complete a circuit.

**coil, electric** – Successive turns of insulated wire that create a magnetic field when an electric current is passed through them.

**conductor** – Material with the ability to carry electric current. The term is also used for an electric wire.

**conduit** – A tube or trough for protecting wires or cables. It may be a solid or flexible tube in which insulated electrical wires are run.

**connector** – Generally, any device used to provide rapid connect/disconnect service for electrical cable and wire terminations.

**contacts** – Electrically conductive points, or cell points, used to make or break an electrical circuit mechanically.

**continuous duty** – Refers to a device that can operate continuously with no off or rest periods.

**current** – The flow of electrons through an electrical conductor. Current is measured in amperes (A).

**deadbolt** – A bolt operated manually and not actuated by springs. When locked, the bolt cannot be forced back. A deadbolt is operated (projected and retracted) by a key cylinder or lever handle.

**deadlatch** – A latch in which the latchbolt is positively held in the projected position by an auxiliary mechanism.

**decibel (dB)** – A unit of measurement used to compare measured levels of sound energy (intensity) to the apparent level detected by the human ear, expressed as a logarithmic ratio.

**delay** – A period of time before or during an event.

**direct current (DC)** – Electrical current that travels in only one direction and has negative and positive polarity. It may or may not have an AC ripple component. DC sources that are unfiltered should be referred to as full-wave or half-wave rectified AC.

**dogging device** – As used in exit devices, a mechanism that fastens the cross bar in the fully depressed position, and also retains the latch bolt or bolts in a retracted position, thus permitting free operation of the door from either side.

**door status switch (DSS)** – A DSS is a switch used to monitor whether a door is in an opened or closed position.

**double pole, double throw (DPDT)** – A term to describe a switch or relay output contact form (2 form C) in which two separate switches (with a normally open and normally closed contact and a common connection) operate simultaneously. This form is used to make and break two separate circuits.

**dry contact** – Metallic points making (shorting) or breaking (opening) a circuit. The switched circuit must have its own source of power and is merely routed through the dry contacts.

**fail-safe** – Refers to an electric lock that automatically unlocks with any power interruption. Also called fail unlocked.

**fail-secure** – Refers to an electric lock that requires power to unlock. Also called fail locked.

**form C contact** – A switch mechanism that contains three terminals (normally open, common, and normally closed).

**fuse** – A protective device, placed in a circuit as a safeguard, that contains a metal filament. When the current flow becomes too great, the metal melts, thus breaking the circuit.

**ground** – A conducting connection between an electrical circuit and the earth or other large conducting body to serve as an electrical ground, thus making a complete electrical circuit.

**ground, earth** – The portion of a circuit that is connected to a buried metallic object, such as a grounding rod or water pipe.

**input voltage** – The designed power source requirement needed by equipment in order to operate properly.

**intermittent duty solenoid** – A solenoid designed to be energized for short periods of time. Continuous operation may damage an intermittent duty solenoid.

**latch** – The locking of a circuit by means of a holding contact.

**light-emitting diode (LED)** – A diode, a solid-state device, that gives off virtually heatless colored light when electric current is passed through it. LEDs are very efficient and long-lasting and are often used for digital readouts and annunciators. Common colors include red, green, and amber.

**listed** – Refers to equipment or materials included in a list published by an authorizing organization. The listing states that the equipment or material met appropriate standards or has been tested for and suited to a specific application.

**load** – Any device that consumes electrical power; the amount of power required for operation of circuit or device.

**lock status sensor (LSS)** – Indicates low voltage and/or tampering of the lock face locally or at a remote monitoring location through a relay and LED.

**maintained switch** – A switch that, when activated, maintains that position until it is deactivated.

**mode of operation** – The specified operating condition of a switch, lock door system, and so forth.

**momentary switch** – A spring-loaded contact that, when pressed, activates the contacts. When pressure is removed, the contacts revert to normal.

**National Electrical Manufacturers Association (NEMA)** – An organization that is known for its standardization of wire and cable specifications.

**normally closed (NC)** – The condition or position of contact prior to initiation or energization, in this case, a closed condition.

**normally open (NO)** – The condition or position of a contact prior to initiation or energization, in this case, an open condition.

**operating voltage current** – The voltage by which a system operates; a nominal voltage with a specified tolerance applied; the design voltage range necessary to remain within the operating tolerance. For example, for a system specified 120 volts +/- 10 percent of nominal, 120 volts is the nominal voltage and design voltage range is 108 to 132 volts AC.

**output voltage** – The designed power source produced by a power supply to operate equipment.

**rated voltage** – The maximum voltage at which electric components can operate for extended periods without undue degradation or safety hazard.

**rectifier** – A solid-state electrical device that allows current to flow in one direction only. It is designed to convert alternating current to direct current.

**regulated power supply** – Provides a constant output, regardless of voltage variations.

**relay** – An electrically controlled device that opens and closes electrical contacts to affect the operation of other devices in the same or another electrical circuit.

**remote alarm** – A visual or audible signaling device used to signal violations at locations removed from the central control station or monitored opening. For example, a remote alarm may be placed on the roof, in a stair tower, or at guard stations outside of a building.

## Glossary Cont'd

**remote reset** – A switch located at a monitored opening. If a violation occurs, the alarm at the control console cannot be turned off until the door is secured and the remote reset is activated. Its purpose is to ensure the inspection of an opening that has been violated or left open.

**reset time** – The time required to return the output to its original condition.

**resistance** – The opposition to the flow of an electric current (measured in ohms); the reciprocal of conductance.

**resistor** – A circuit element whose chief purpose is to oppose the flow of current.

**short** – An improper connection between current-carrying wire and neutral or ground.

**single pole, double throw (SPDT)** – A term used to describe a switch or relay contact form (1 form C), that has a normally open and a normally closed contact with a common connection.

**single pole, single throw (SPST)** – A switch with one moving and one stationary contact, available either normally open (NO) or normally closed (NC).

**solenoid** – An electromechanical device that operates the lockbolt. When electricity is applied, a mechanical motion is obtained that moves the bolt.

**spike** – A momentary increase in electrical current. Spikes can damage electronic equipment.

**strike** – A plate mortised into or mounted on the door jamb to accept and restrain bolt when the door is closed. In some metal installations of deadlock, the strike may simply be an opening into the jamb. (Synonym: keeper)

**switches** – Devices that make or break connections in an electrical or electronic circuit. In computing systems, they are also used to make selections. (The toggle switch, for example, completes a condition jump.) Switches are usually manually operated but can also work by mechanical, thermal, electromechanical, barometric, hydraulic, or gravitational means.

**switch, normally open** – A switch that, when not activated, is open and does not permit current flow.

**switch, normally closed** – A switch that, when not activated, is closed to form a path for current.

**transformer** – An electric device that changes voltage in direct proportion to currents and in inverse proportion to the ratio of the number of turns of primary and secondary windings. The input side of transformer is the primary side. The output low-voltage side is called the transformer secondary.

**volt (V)** – A unit of electromotive force. It is the difference of potential required to make a current of one ampere through a resistance of one ohm.

**voltage** – The term most often used (in place of electromotive force, potential, potential difference or voltage drop) to designate electrical pressure that exists between two points and is capable of producing a flow of current (when a closed circuit is connected between the two points).

**voltage drop** – Voltage loss experienced by electric circuits due to two principal factors: (1) wire size and (2) length of wire runs.

**watt** – The common unit of electrical power. A watt is dissipated by a resistance of one ohm through which one ampere flows.

**zone** – A specific area of protection; a portion of a large protected area.



**Head Office**  
210 Shearson Crescent  
Cambridge, ON N1T 1J6  
Canada

**USA East**  
2517 Squadron Court, Suite 104,  
Virginia Beach, VA 23453  
USA

**USA West**  
3025 E La Jolla Street  
Anaheim, CA 92806  
USA